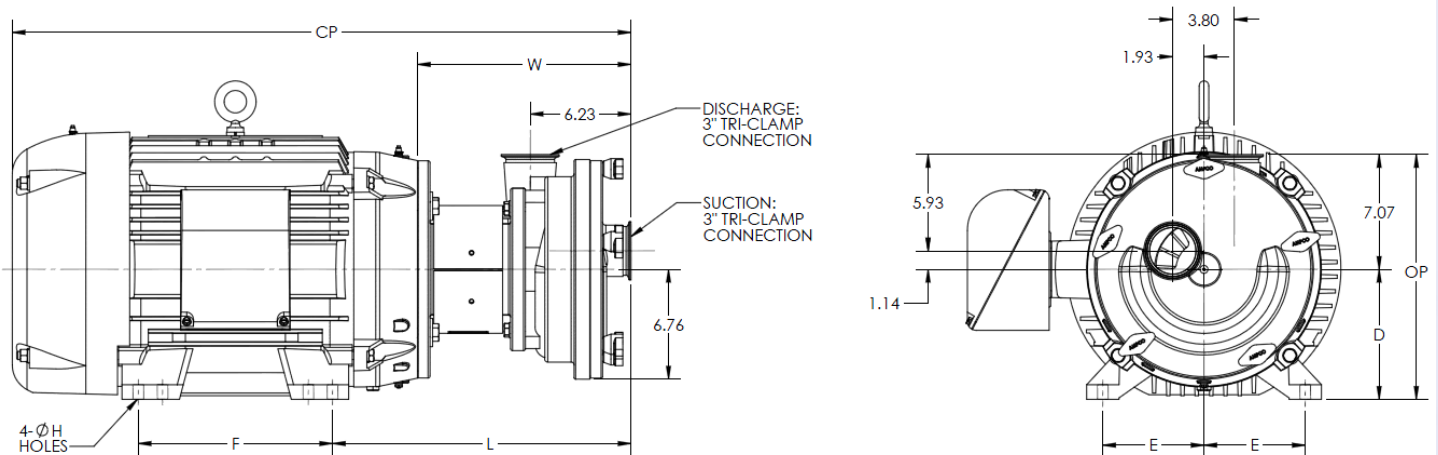
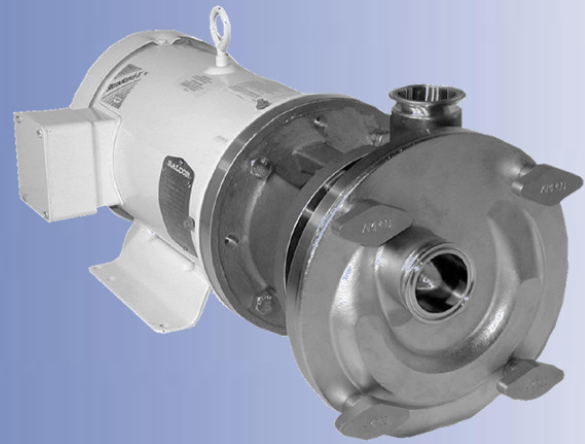


Ampco Centrifugal Pumps

DATA SHEET

MODEL SP-240 3 x 3



TEFC MOTOR											APPROX WEIGHT (LBS)
HP	RPM	FRAME	D	E	F	H	L	W	CP	OP	
40	1750	324TC	8	6 1/4	10 1/2	φ21/32	18.44	13.19	38.17	15.07	728
50	1750	326TC	8	6 1/4	12	φ21/32	18.44	13.19	38.17	15.07	728
60	1750	364TC	9	7	11 1/4	φ21/32	19.07	13.19	41.07	16.07	1053
75	1750	365TC	9	7	12 1/4	φ21/32	19.07	13.19	41.07	16.07	1053

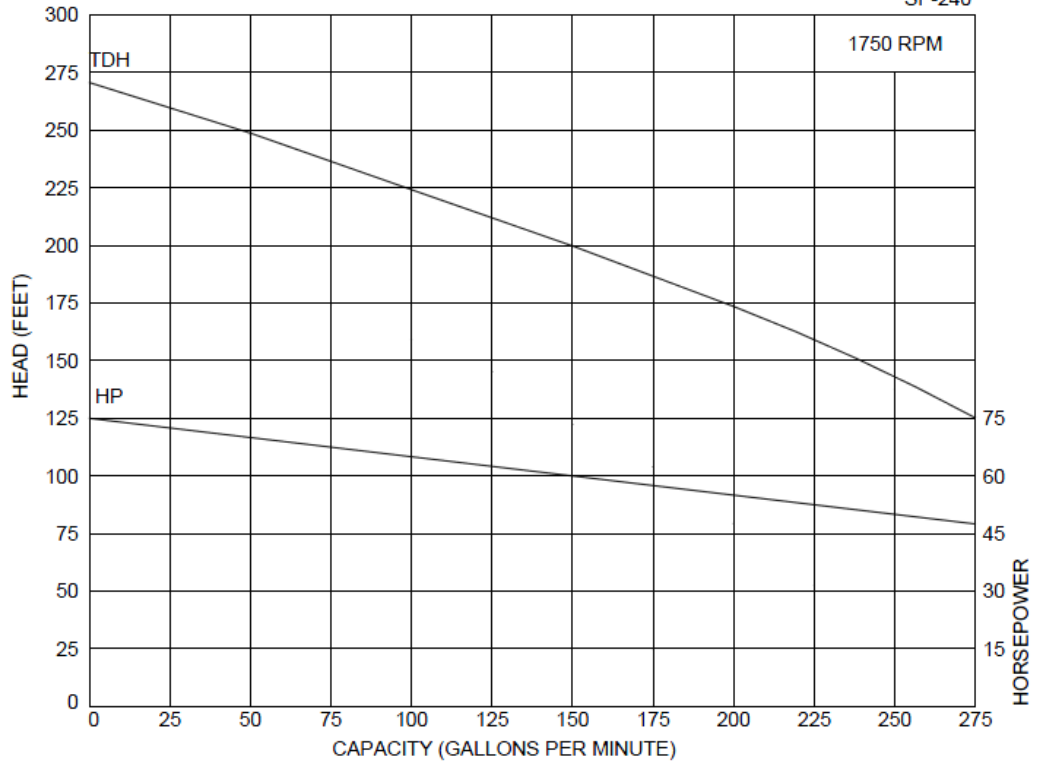
MATERIAL SPECIFICATIONS

PART NAME	STAINLESS STEEL
Casing, Cover, & Impeller	316L Stainless
Stub Shaft	316L Stainless
Adapter	304 Stainless

Ampco Centrifugal Pumps

MODEL SP-240 3 X 3

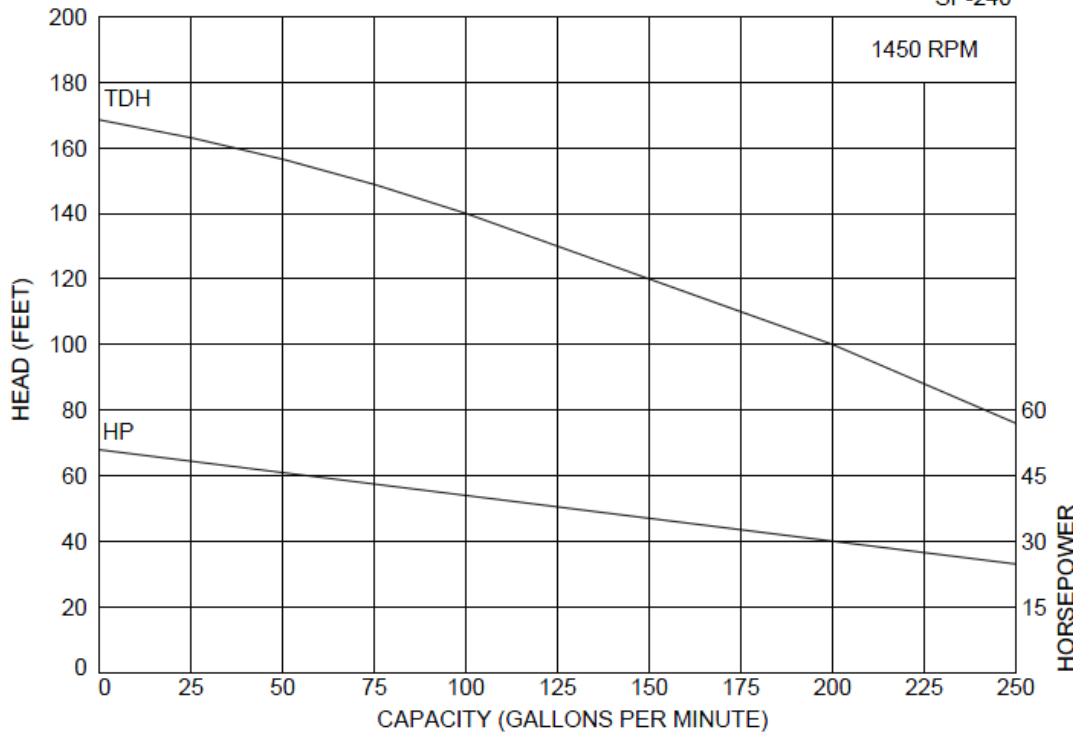
AMPCO PUMPS COMPANY, INC.
SP-240



Curves show approximate characteristics based on clear 68°F water. Rated point is guaranteed.

SP-Series pumps have standard stainless steel adapters and silicon carbide vs. carbon seals.

AMPCO PUMPS COMPANY, INC.
SP-240



SP pumps are in conformance with 3A sanitary standards for centrifugal and positive rotary pumps for milk and milk products, No. 02-10.

SP-Series pumps have a standard 32 Ra (150 grit) finish on all product contact surfaces.

Ampco Pumps Company

2045 West Mill Road
Glendale, Wisconsin 53209
PHONE (414) 643-1852
FAX (414) 643-4452