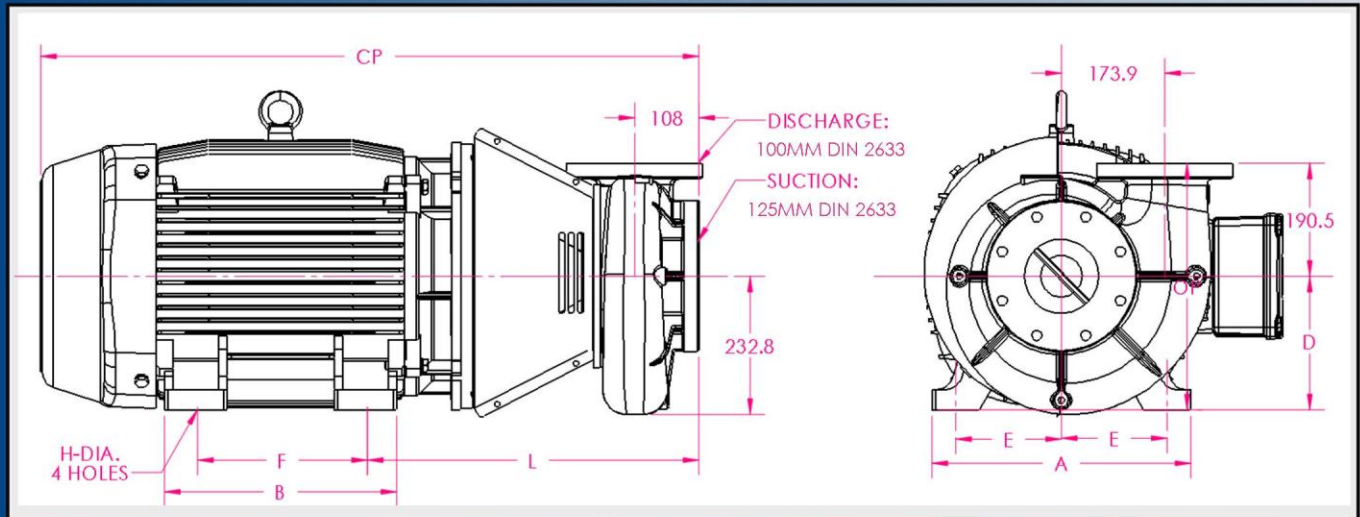
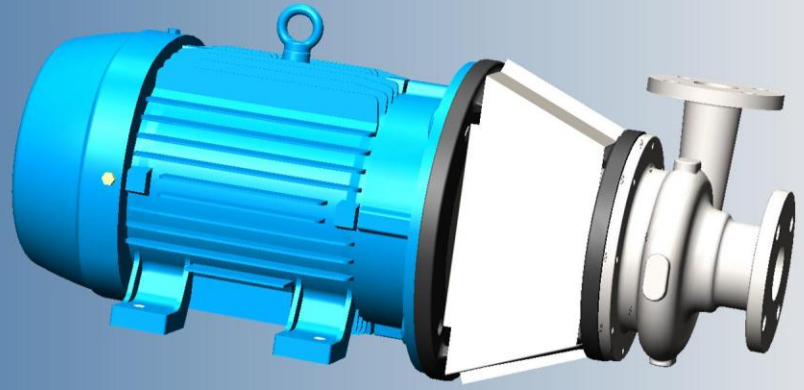


Ampco Centrifugal Pumps

DATA SHEET

MODEL ZCM/ZCHM 5x4P



IEC MOTOR		DIMENSIONS IN MM (For Reference Only)									APPROX. WEIGHT (KG)
FRAME	KW/RPM	A (max)	B (max)	D	E	F	H	L	CP	OP	
132S	5.5/1450; 5.5/2900; 7.5/2900	248.0	187.0	132.0	108.0	140.0	12.0	389.2	670.8	332.0	123
132M	7.5/1450	248.0	187.0	132.0	108.0	178.0	12.0	389.2	670.8	332.0	123
160M	11/1450; 11/2900; 15/2900	308.0	254.0	160.0	127.0	210.0	14.5	451.1	831.1	360.0	185
160L	15/1450; 18.5/2900	308.0	254.0	160.0	127.0	254.0	14.5	451.1	831.1	360.0	207
180M	18.5/1450; 22/2900	350.0	294.0	180.0	139.5	241.0	14.5	464.2	896.8	380.0	261
180L	22/1450	350.0	294.0	180.0	139.5	279.0	14.5	464.2	896.8	380.0	261
200L	30/1450; 30/2900	385.0	332.0	200.0	159.0	267.0	18.5	489.6	974.3	400.0	303
225S	37/1450	436.0	391.0	225.0	178.0	286.0	18.5	548.9	1108.4	415.5	497
225M	45/1450; 45/2900	436.0	391.0	225.0	178.0	311.0	18.5	548.9	1108.4	415.5	497

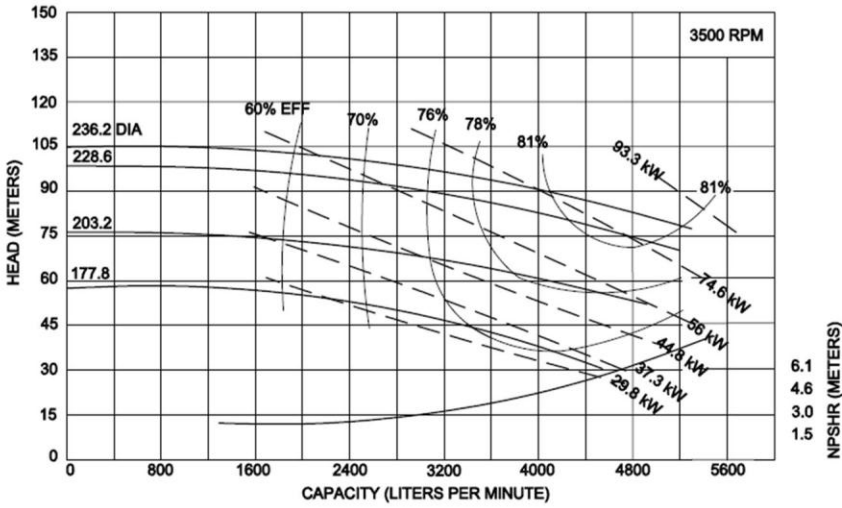
MATERIAL SPECIFICATIONS

PART NAME	NICKEL ALUMINUM BRONZE	STAINLESS STEEL	DUPLEX STAINLESS 2205
Casing, Cover & Impeller	AMPCO® 483	316 Stainless Steel	Duplex Stainless 2205
Wear Rings	AMPCO® 18	316 Stainless Steel	Duplex Stainless 2205
Motor Shaft	Steel	Steel	Steel
Shaft Sleeve	AMPCO® 18	316 Stainless Steel	Duplex Stainless 2205
Adapter	Cast Iron	Cast Iron	Cast Iron

Ampco Centrifugal Pumps

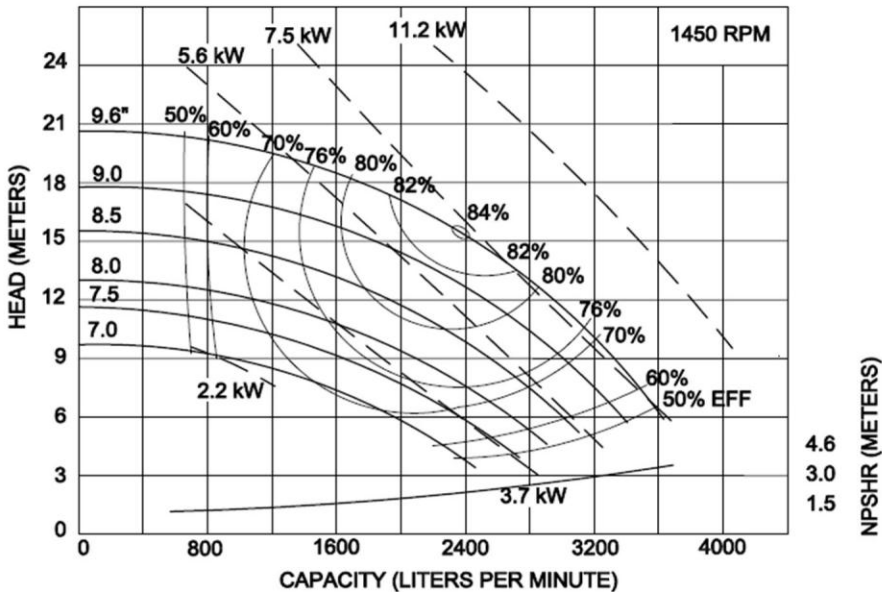
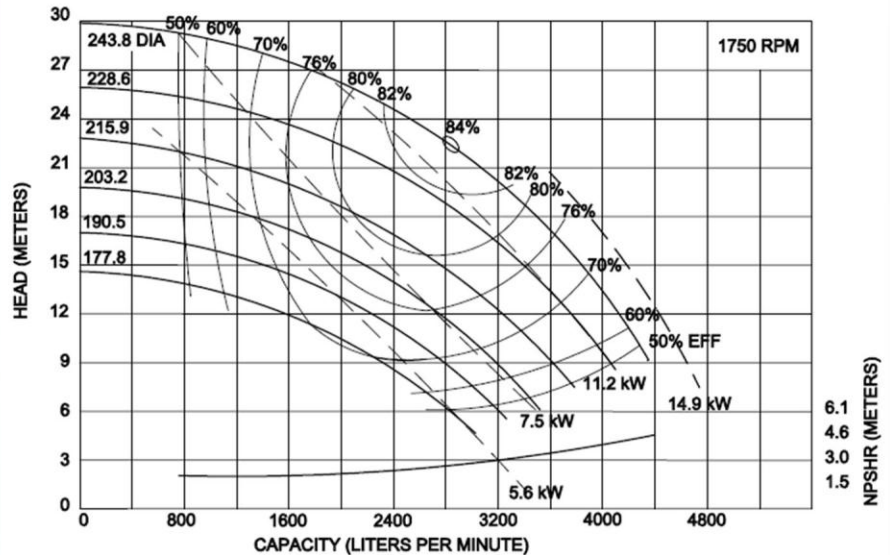
MODEL ZCM/ZCHM 5x4P

Curves show approximate characteristics
Based on clear 20° water.
Rated point is guaranteed.



Heavy-duty Z Series pumps have maximum wall thickness and Din PN10 flanged connections.

Seal options include Type 21, Type 1 and Type 9 with choice of sealing materials.



Ampco Pumps Company

2045 West Mill Road
Glendale, WI 53209
Phone: (414) 643-1852
Fax: (414) 643-4452

