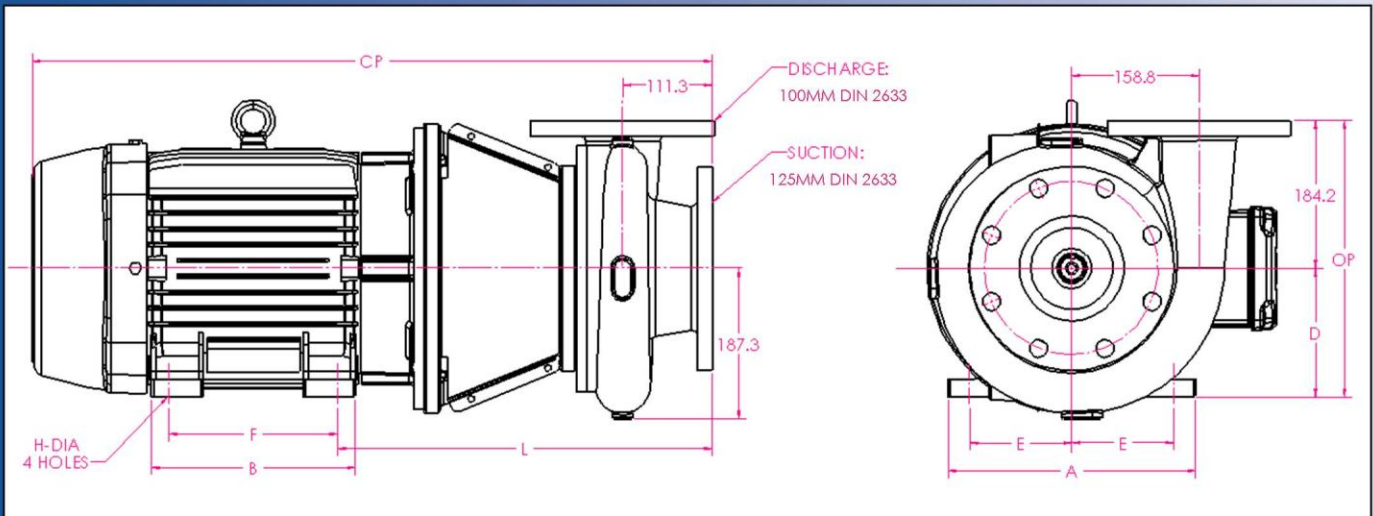
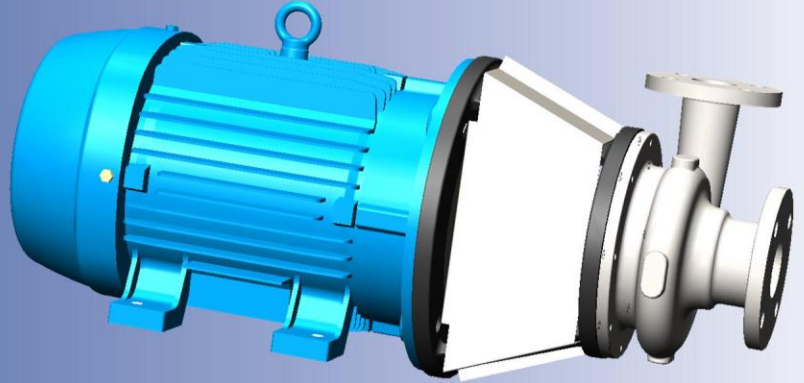


# Ampco Centrifugal Pumps

DATA SHEET

MODEL ZCM/ZCHM 5x4



IEC MOTOR		DIMENSIONS IN MM (For Reference Only)									APPROX. WEIGHT (KG)
FRAME	KW/RPM	A (max)	B (max)	D	E	F	H	L	CP	OP	
132S	5.5/1450; 5.5/2900; 7.5/2900	248.0	187.0	132.0	108.0	140.0	12.0	404.0	685.6	316.2	128
132M	7.5/1450	248.0	187.0	132.0	108.0	178.0	12.0	404.0	685.6	316.2	137
160M	11/1450; 11/2900; 15/2900	308.0	254.0	160.0	127.0	210.0	14.5	466.0	845.9	344.2	191
160L	15/1450; 18.5/2900	308.0	254.0	160.0	127.0	254.0	14.5	466.0	845.9	344.2	213

## MATERIAL SPECIFICATIONS

PART NAME	NICKEL ALUMINUM BRONZE
Casing, Cover & Impeller	AMPCO® 482
Wear Rings	AMPCO® 18
Motor Shaft	Steel
Shaft Sleeve	AMPCO® 18
Adapter	Cast Iron

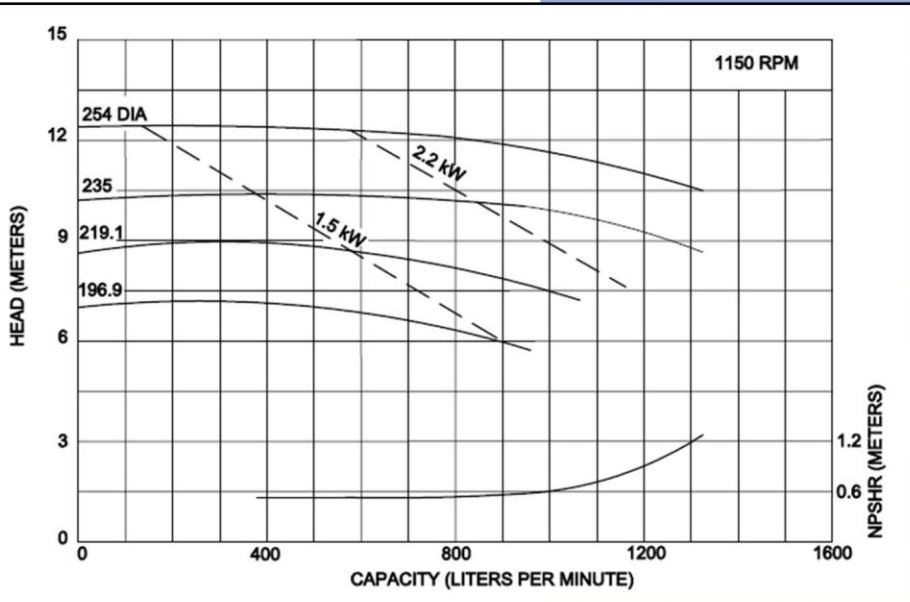
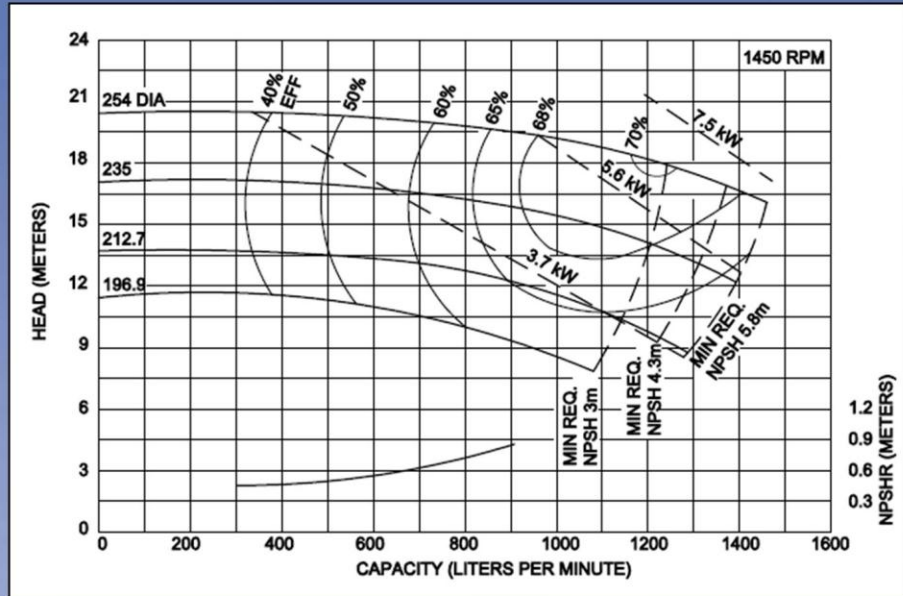
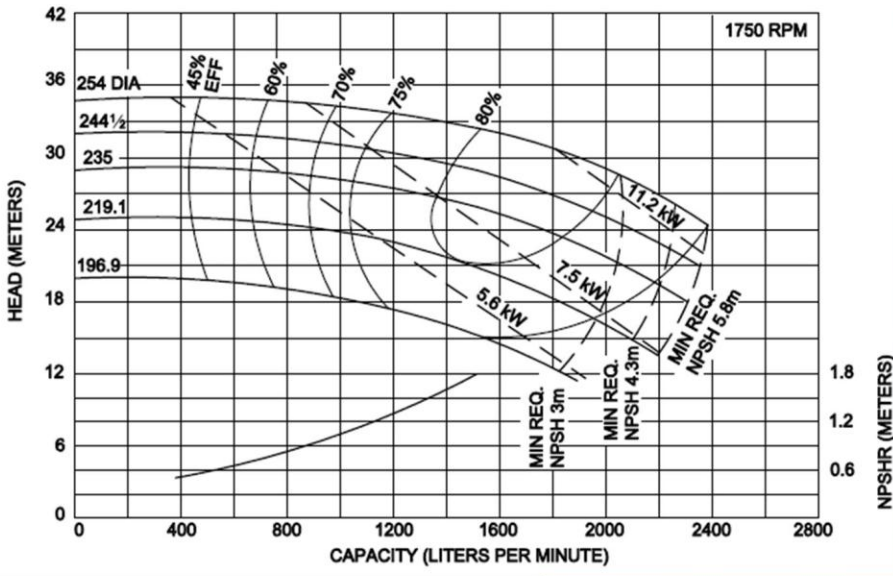
# Ampco Centrifugal Pumps

## MODEL ZCM/ZCHM 5x4

Curves show approximate characteristics  
Based on clear 20° water.  
Rated point is guaranteed.

Heavy-duty Z Series pumps have maximum wall thickness and Din PN10 flanged connections.

Seal options include Type 21, Type 1 and Type 9 with choice of sealing materials.



# Ampco Pumps Company

2045 West Mill Road  
Glendale, WI 53209  
Phone: (414) 643-1852  
Fax: (414) 643-4452

