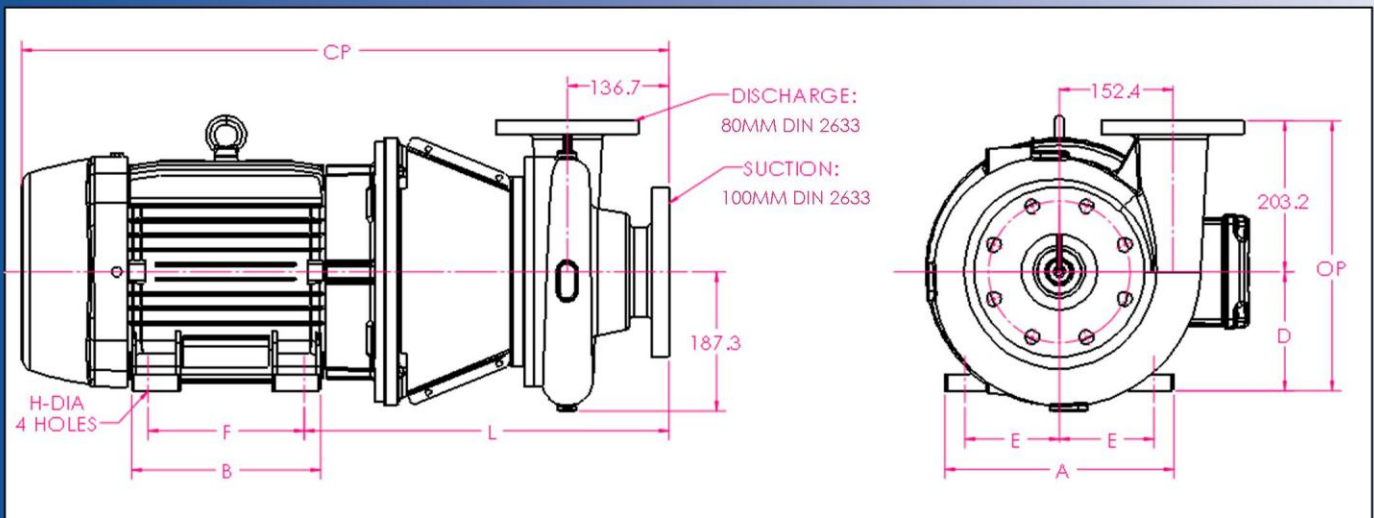
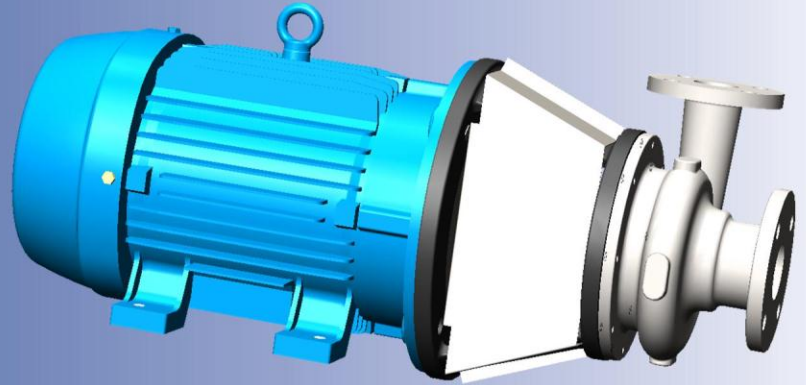


Ampco Centrifugal Pumps

DATA SHEET

MODEL ZCM/ZCHM 4x3L



IEC MOTOR		DIMENSIONS IN MM (For Reference Only)									APPROX. WEIGHT (KG)
FRAME	KW/RPM	A (max)	B (max)	D	E	F	H	L	CP	OP	
132S	5.5/1450; 5.5/2900; 7.5/2900	248.0	187.0	132.0	108.0	140.0	12.0	428.3	709.9	335.2	129
132M	7.5/1450	248.0	187.0	132.0	108.0	178.0	12.0	428.3	709.9	335.2	138
160M	11/1450; 11/2900; 15/2900	308.0	254.0	160.0	127.0	210.0	14.5	490.3	870.2	363.2	192
160L	15/1450; 18.5/2900	308.0	254.0	160.0	127.0	254.0	14.5	490.3	870.2	363.2	214

MATERIAL SPECIFICATIONS

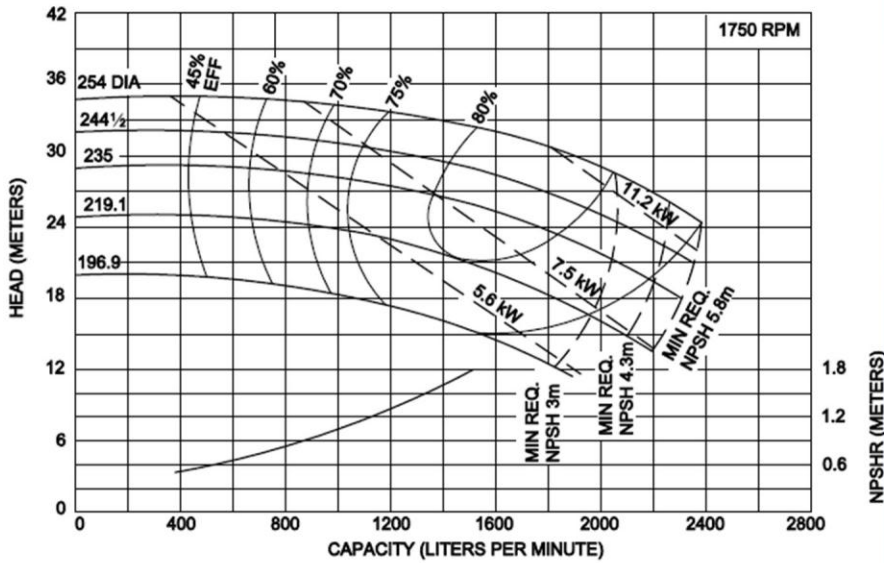
PART NAME	NICKEL ALUMINUM BRONZE	STAINLESS STEEL
Casing, Cover & Impeller	AMPCO® 483	316 Stainless
Wear Ring	AMPCO® 18	316 Stainless
Motor Shaft	Steel	Steel
Shaft Sleeve	AMPCO® 18	316 Stainless
Adapter	Cast Iron	Cast Iron

* Also available in Duplex 2205

Ampco Centrifugal Pumps

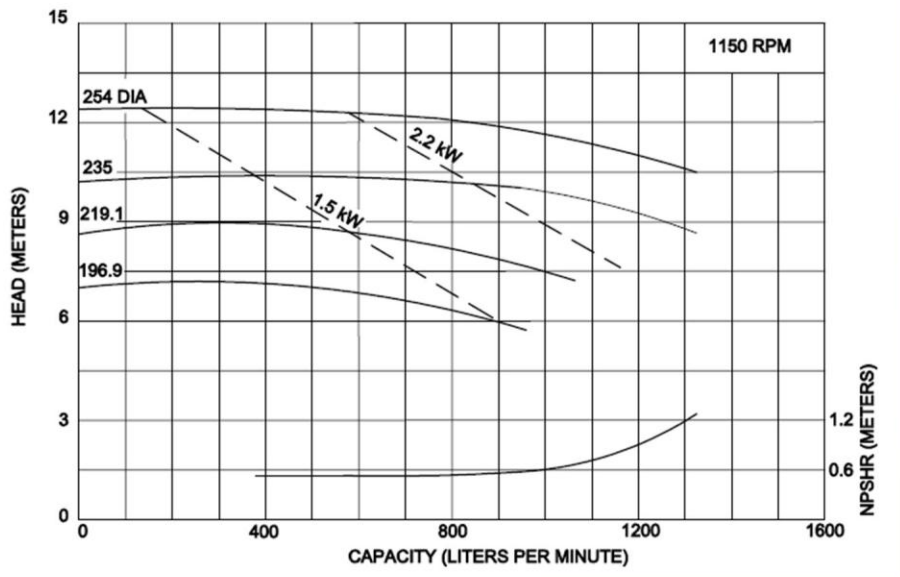
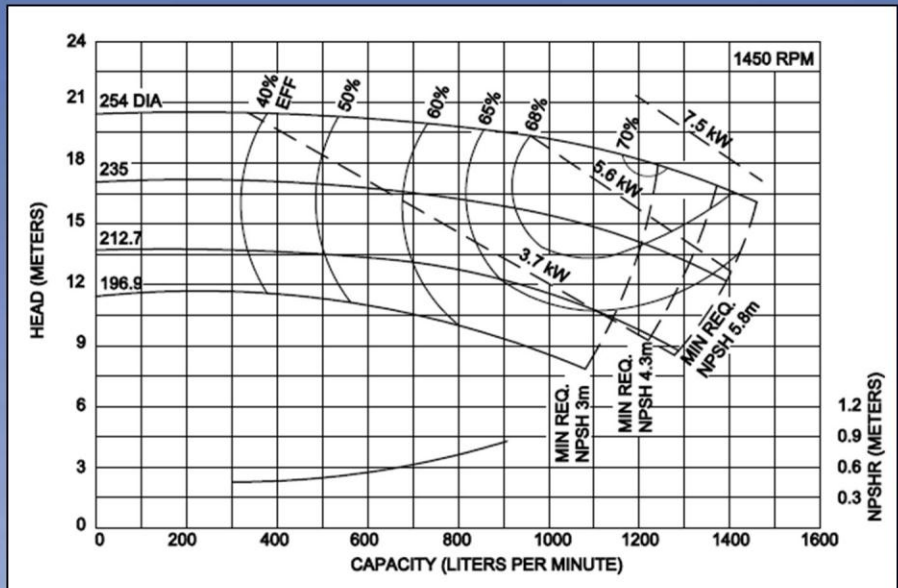
MODEL ZCM/ZCHM 4x3L

Curves show approximate characteristics
Based on clear 20° water.
Rated point is guaranteed.



Heavy-duty Z Series pumps have maximum wall thickness and Din PN10 flanged connections.

Seal options include Type 21, Type 1 and Type 9 with choice of sealing materials.



Ampco Pumps Company

2045 West Mill Road
Glendale, WI 53209
Phone: (414) 643-1852
Fax: (414) 643-4452

