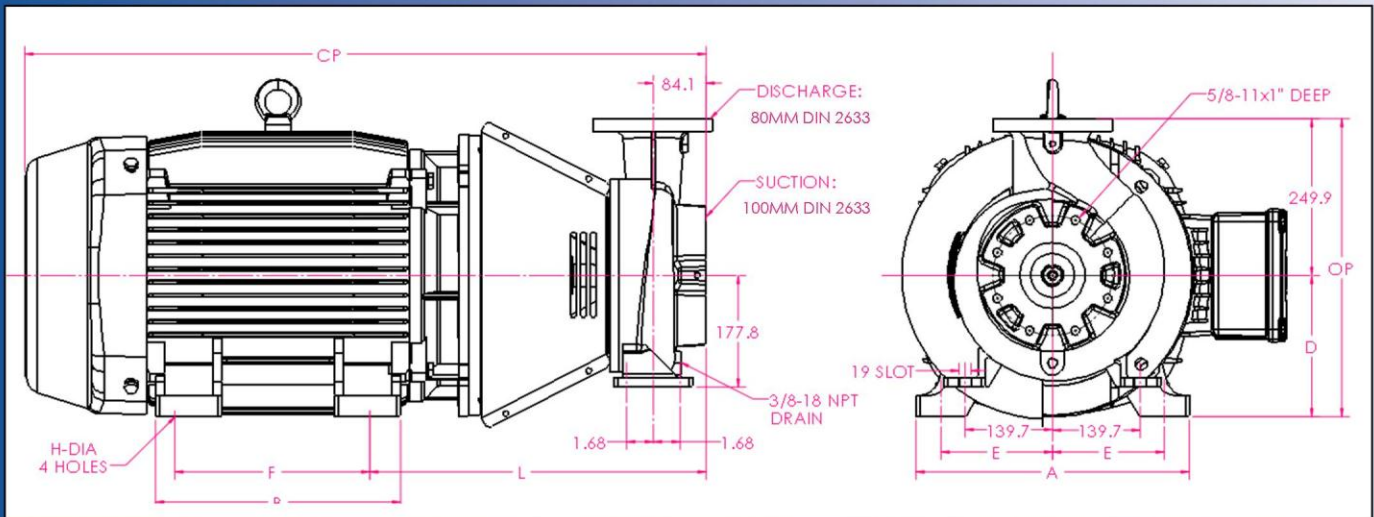
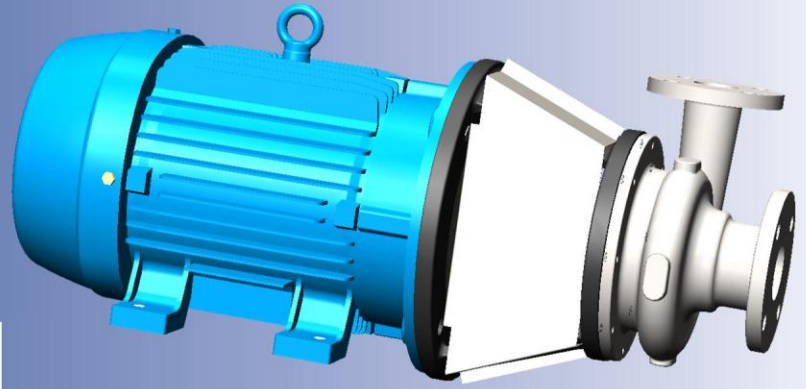


Ampco Centrifugal Pumps

DATA SHEET

MODEL ZCM/ZCHM 4x3C



IEC MOTOR		DIMENSIONS IN MM (For Reference Only)									APPROX. WEIGHT (KG)
FRAME	KW/RPM	A (max)	B (max)	D	E	F	H	L	CP	OP	
90L	1.5/1450; 2.2/2900	169.4	144.9	90.0	70.0	125.0	10.0	300.1	523.5	339.9	84
100L	2.2/1450; 3/2900	196.0	170.0	99.4	80.0	140.0	12.0	321.5	574.5	349.9	93
112M	4/1450; 4/2900	220.0	177.0	111.4	95.0	140.0	12.0	328.5	592.5	361.9	106
132S	5.5/1450; 5.5/2900; 7.5/2900	248.0	187.0	131.7	108.0	140.0	12.0	387.7	669.3	381.9	133
132M	7.5/1450	248.0	187.0	131.7	108.0	178.0	12.0	387.7	669.3	381.9	142
160M	11/1450; 11/2900; 15/2900	308.0	254.0	160.0	127.0	210.0	14.5	449.6	829.5	409.9	196
160L	15/1450; 18.5/2900	308.0	254.0	160.0	127.0	254.0	14.5	449.6	829.5	409.9	196
180M	18.5/1450; 22/2900	350.0	294.0	180.0	139.5	241.0	14.5	462.6	895.2	429.9	271
180L	22/1450	350.0	294.0	180.0	139.5	279.0	14.5	462.6	895.2	429.9	271
200L	30/1450; 30/2900	385.0	332.0	200.0	159.0	305.0	18.5	488.1	972.8	449.9	314
225S	37/1450	436.0	391.0	225.0	178.0		18.5	527.2	1086.7	474.9	466

MATERIAL SPECIFICATIONS

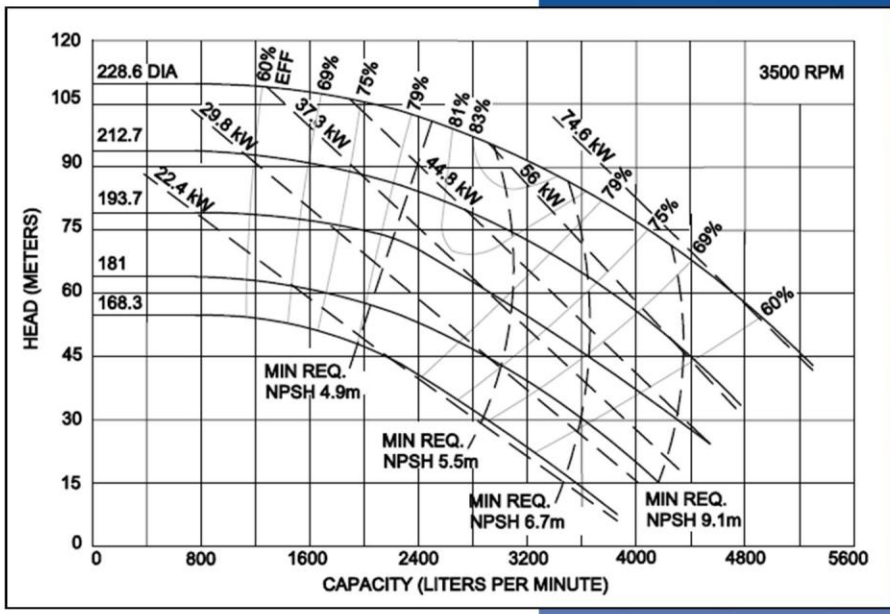
PART NAME	NICKEL ALUMINUM BRONZE	STAINLESS STEEL
Casing, Cover & Impeller	AMPCO® 483	316 Stainless
Wear Ring	AMPCO® 18	316 Stainless
Motor Shaft	Steel	Steel
Shaft Sleeve	AMPCO® 18	316 Stainless
Adapter	Cast Iron	Cast Iron

* Also available in Duplex 2205

Ampco Centrifugal Pumps

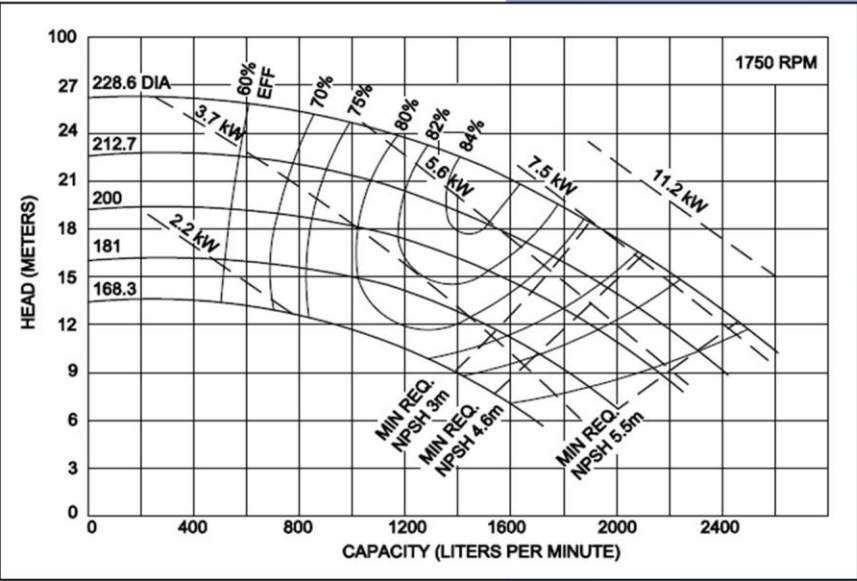
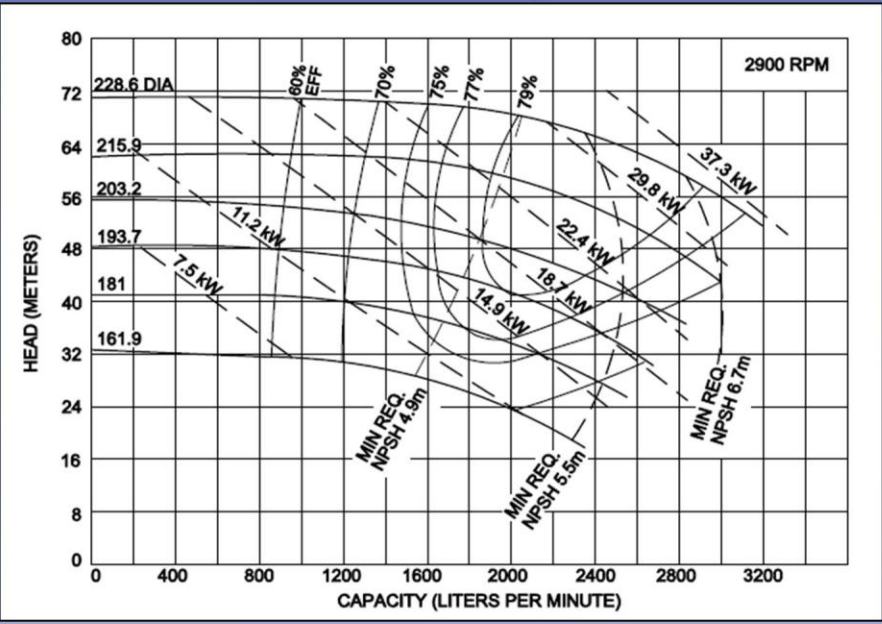
MODEL ZCM/ZCHM 4x3C

Curves show approximate characteristics
Based on clear 20° water.
Rated point is guaranteed.



Heavy-duty Z Series pumps have maximum wall thickness and Din PN10 flanged connections.

Seal options include Type 21, Type 1 and Type 9 with choice of sealing materials.



Ampco Pumps Company

2045 West Mill Road
Glendale, WI 53209
Phone: (414) 643-1852
Fax: (414) 643-4452

