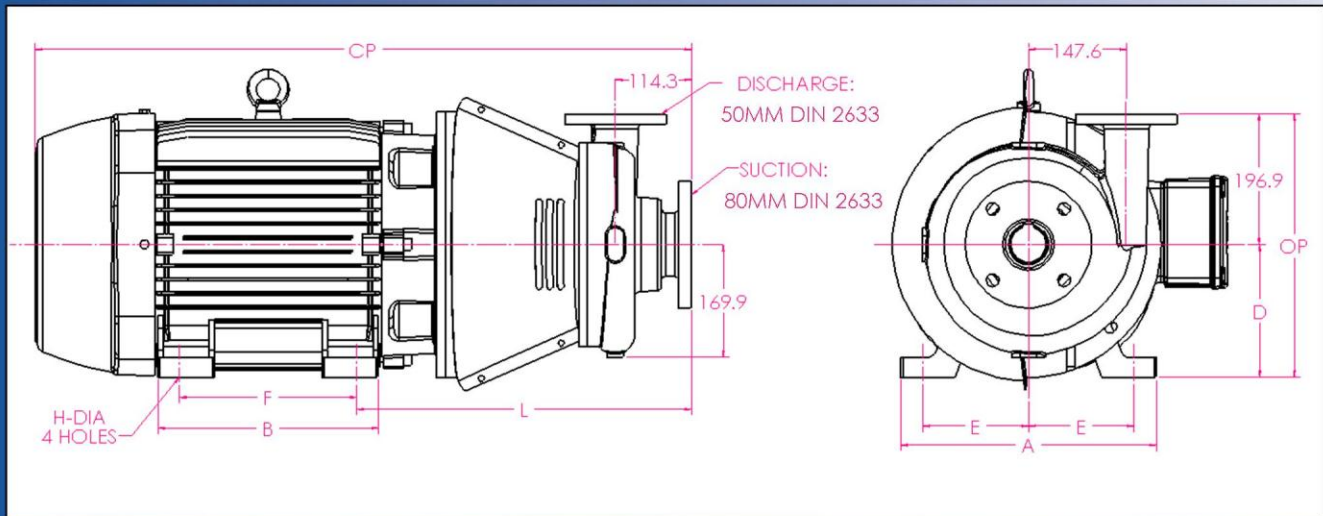
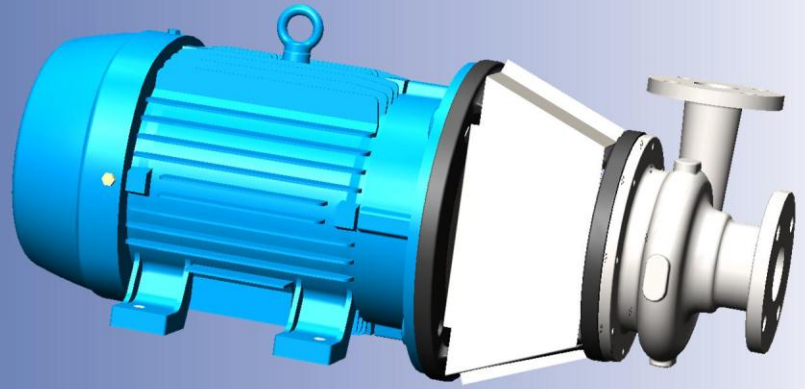


Ampco Centrifugal Pumps

DATA SHEET

MODEL ZCM/ZCHM 3x2



IEC MOTOR		DIMENSIONS IN MM (For Reference Only)									APPROX. WEIGHT (KG)
FRAME	KW/RPM	A (max)	B (max)	D	E	F	H	L	CP	OP	
90L	1.5/1450; 2.2/2900	169.4	144.9	90.0	70.0	125.0	10.0	316.4	539.9	286.9	74
100L	2.2/1450; 3/2900	196.0	170.0	100.0	80.0	140.0	12.0	337.8	590.8	296.9	83
112M	4/1450; 4/2900	220.0	177.0	112.0	95.0	140.0	12.0	344.8	608.8	308.9	96
132S	5.5/1450; 5.5/2900; 7.5/2900	248.0	187.0	132.0	108.0	140.0	12.0	404.0	685.6	328.9	123
132M	7.5/1450	248.0	187.0	132.0	108.0	178.0	12.0	404.0	685.6	328.9	123
160M	11/1450; 11/2900; 15/2900	308.0	254.0	160.0	127.0	210.0	14.5	465.9	845.8	356.9	208
160L	15/1450; 18.5/2900	308.0	254.0	160.0	127.0	254.0	14.5	465.9	845.8	356.9	208
180M	18.5/1450; 22/2900	350.0	294.0	180.0	139.5	241.0	14.5	478.9	911.5	376.9	244
180L	22/1450	350.0	294.0	180.0	139.5	279.0	14.5	478.9	911.5	376.9	244
200L	30/1450; 30/2900	385.0	332.0	200.0	159.0	305.0	18.5	504.4	989.1	396.9	304
225S	37/1450	436.0	391.0	225.0	178.0	286.0	18.5	563.7	1123.2	412.4	498

MATERIAL SPECIFICATIONS

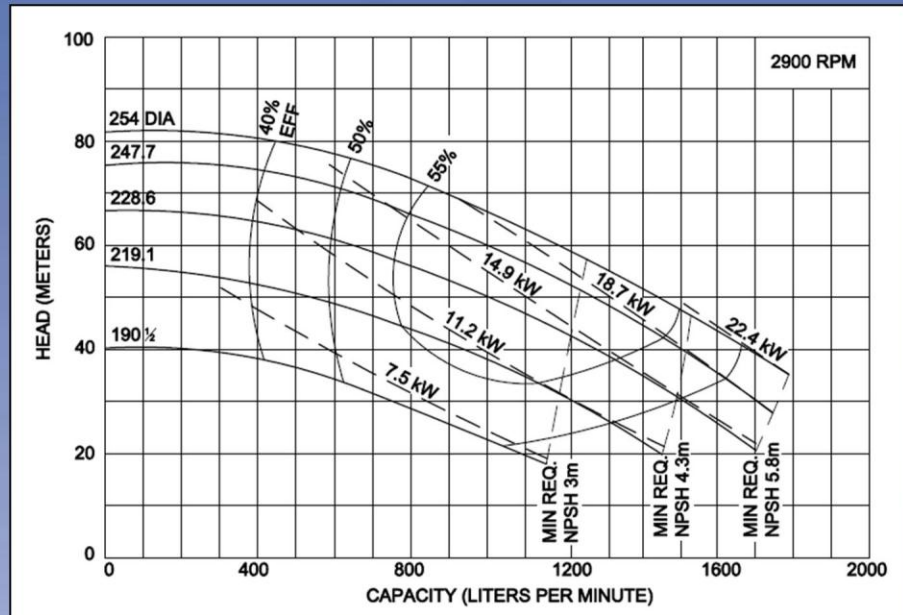
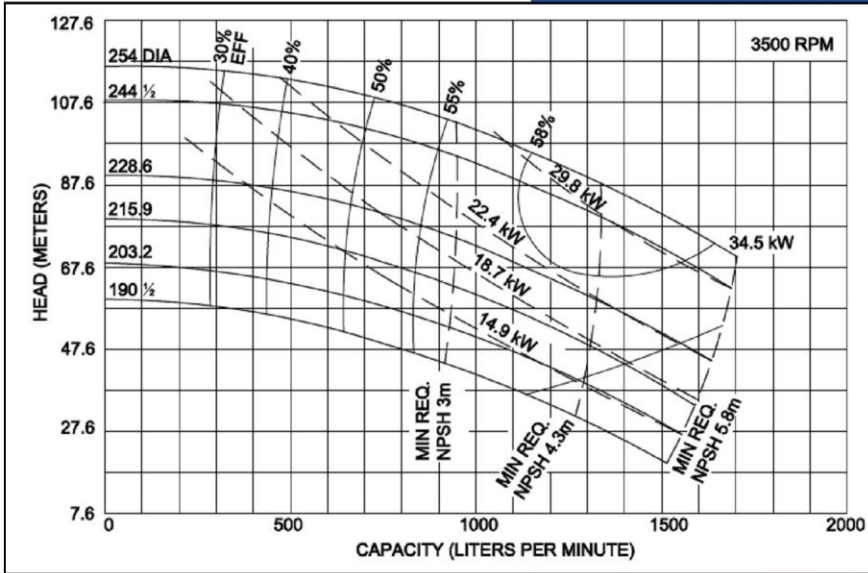
PART NAME	NICKEL ALUMINUM BRONZE	STAINLESS STEEL
Casing, Cover & Impeller	AMPCO® 483	316 Stainless
Wear Ring	AMPCO® 18	316 Stainless
Motor Shaft	Steel	Steel
Shaft Sleeve	AMPCO® 18	316 Stainless
Adapter	Cast Iron	Cast Iron

* Also available in Duplex 2205

Ampco Centrifugal Pumps

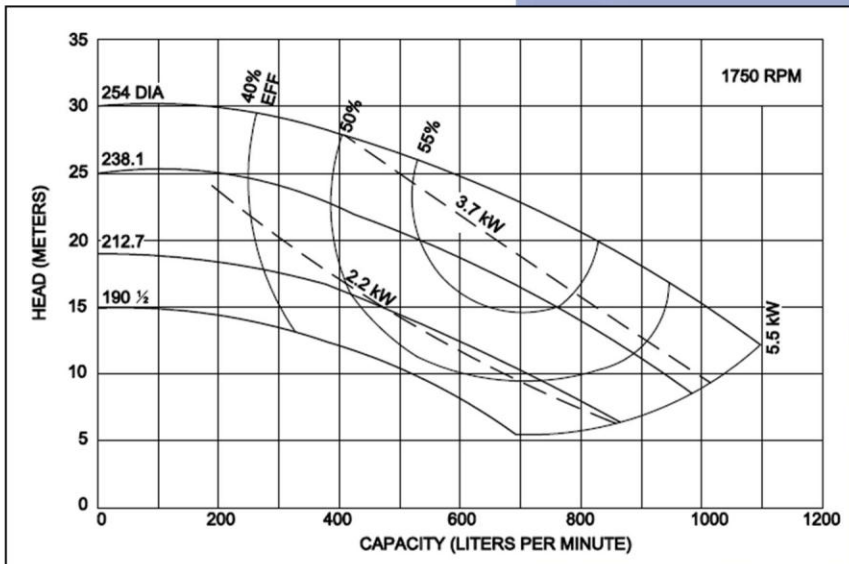
MODEL ZCM/ZCHM 3x2

Curves show approximate characteristics
Based on clear 20° water.
Rated point is guaranteed.



Heavy-duty Z Series pumps
have maximum wall
thickness and Din PN10
flanged connections.

Seal options include Type
21, Type 1 and Type 9 with
choice of sealing materials.



Ampco Pumps Company

2045 West Mill Road
Glendale, WI 53209
Phone: (414) 643-1852
Fax: (414) 643-4452

