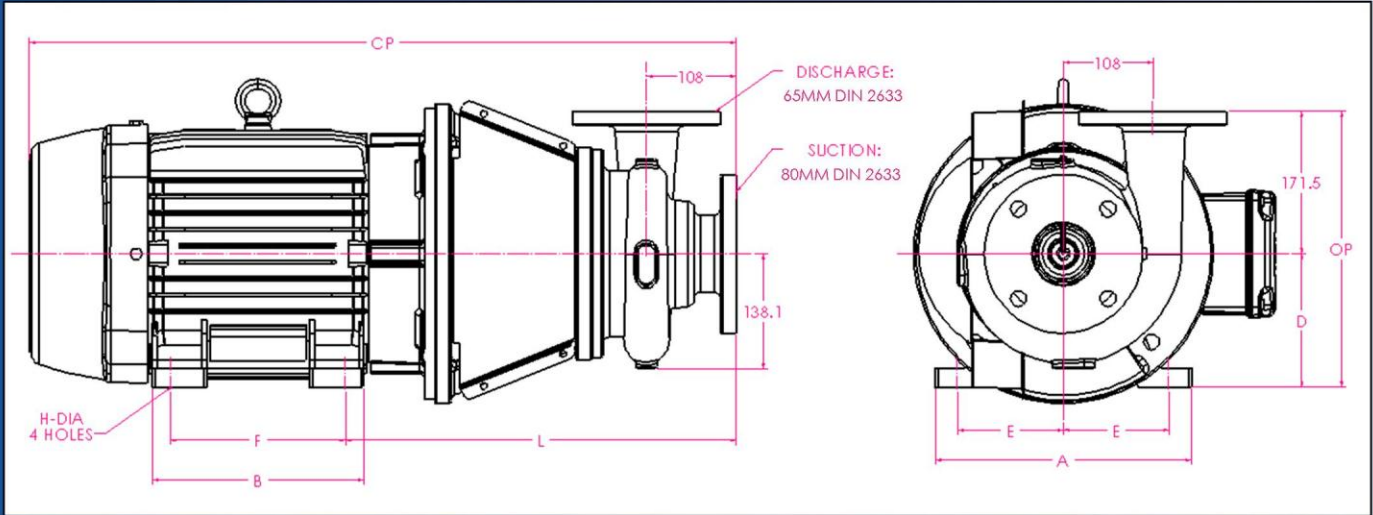
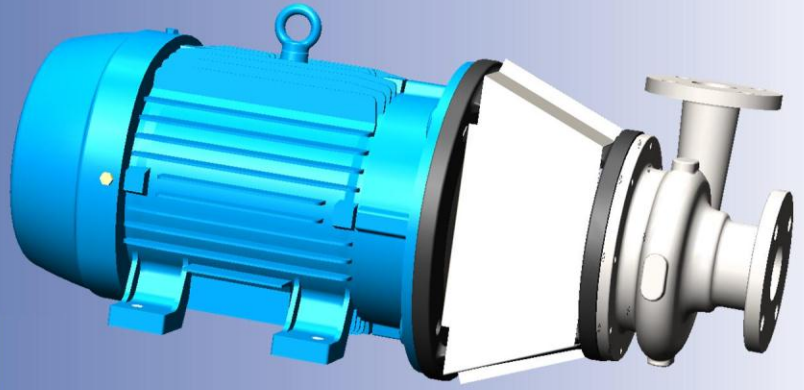


# Ampco Centrifugal Pumps

DATA SHEET

MODEL ZCM/ZCHM 3x2 1/2

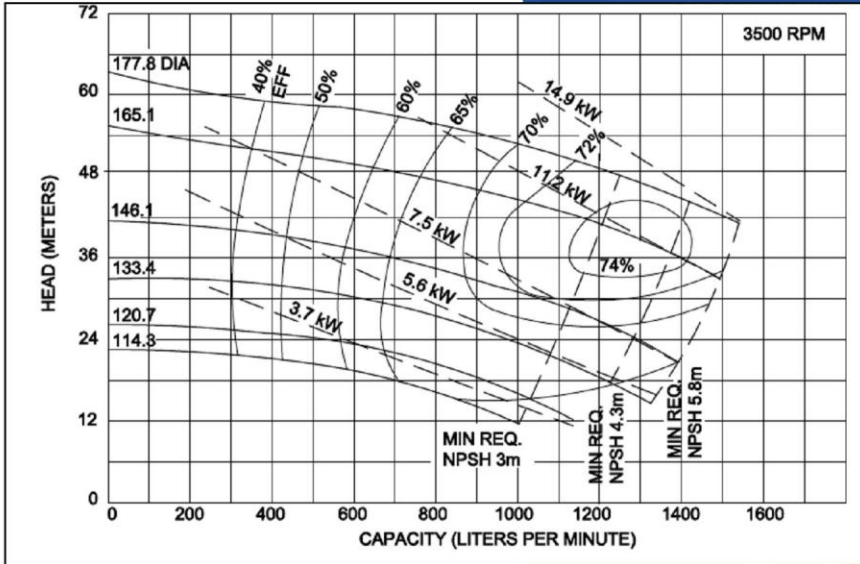


IEC MOTOR		DIMENSIONS IN MM (For Reference Only)									APPROX. WEIGHT (KG)
FRAME	KW/RPM	A (max)	B (max)	D	E	F	H	L	CP	OP	
80	0.75/1450; 0.75/2900; 1.1/2900	155.1	124.0	80.0	65.6	100.0	10.0	317.5	502.0	251.5	44
90S	1.1/1450; 1.5/2900	169.4	144.9	90.0	70.0	100.0	10.0	320.5	544.0	261.5	53
90L	1.5/1450; 2.2/2900	169.4	144.9	90.0	70.0	125.0	10.0	320.5	544.0	261.5	53
100L	2.2/1450; 3/2900	196.0	170.0	100.0	80.0	140.0	12.0	341.9	594.9	271.5	63
112M	4/1450; 4/2900	220.0	177.0	112.0	95.0	140.0	12.0	348.9	612.9	283.5	75
132S	5.5/1450; 5.5/2900; 7.5/2900	348.0	187.0	132.0	108.0	140.0	12.0	408.1	689.7	303.5	103
132M	7.5/1450	348.0	187.0	132.0	108.0	178.0	12.0	408.1	689.7	303.5	103
160M	11/1450; 11/2900; 15/2900	308.0	254.0	160.0	127.0	210.0	14.5	470.0	849.9	331.5	165
160L	15/1450; 18.5/2900	308.0	254.0	160.0	127.0	254.0	14.5	470.0	849.9	331.5	165
180M	18.5/1450; 22/2900	350.0	294.0	180.0	139.5	241.0	14.5	483.0	915.6	351.5	223

## MATERIAL SPECIFICATIONS

PART NAME	NICKEL ALUMINUM BRONZE	STAINLESS STEEL
Casing, Cover & Impeller	AMPCO® 483	316 Stainless
Wear Ring	AMPCO® 18	316 Stainless
Motor Shaft	Steel	Steel
Shaft Sleeve	AMPCO® 18	316 Stainless
Adapter	Cast Iron	Cast Iron

\* Also available in Duplex 2205



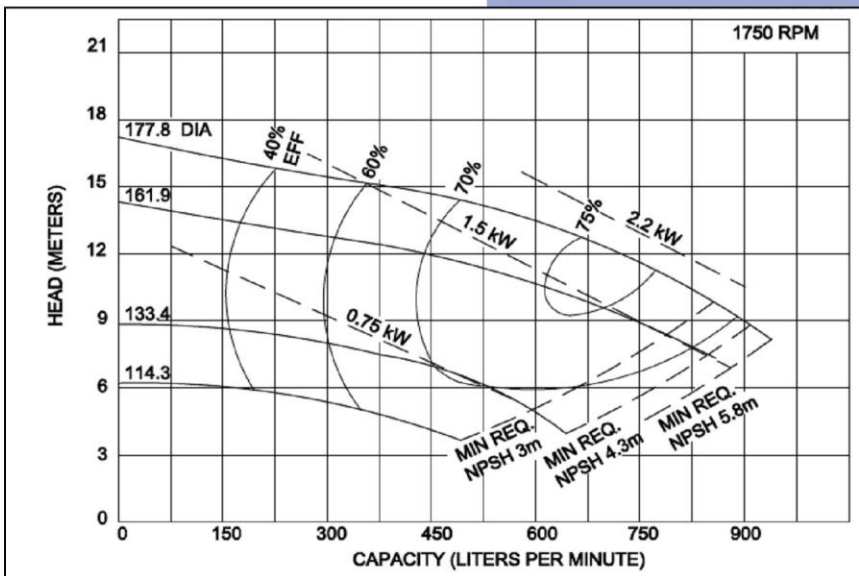
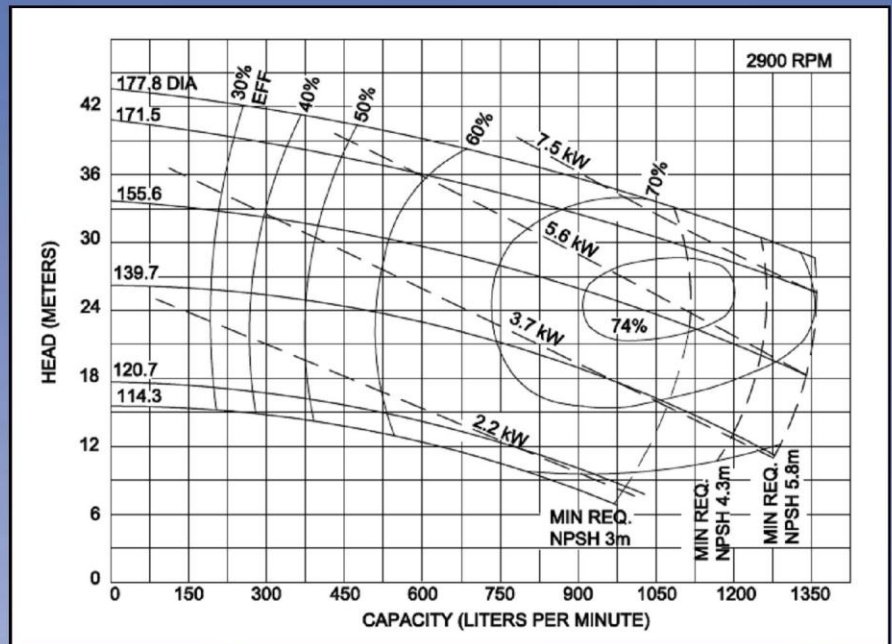
# Ampco Centrifugal Pumps

**MODEL ZCM/ZCHM 3x2 $\frac{1}{2}$**

Curves show approximate characteristics  
Based on clear 20° water.  
Rated point is guaranteed.

Heavy-duty Z Series pumps have maximum wall thickness and Din PN10 flanged connections.

Seal options include Type 21, Type 1 and Type 9 with choice of sealing materials.



## Ampco Pumps Company

2045 West Mill Road  
Glendale, WI 53209  
Phone: (414) 643-1852  
Fax: (414) 643-4452

