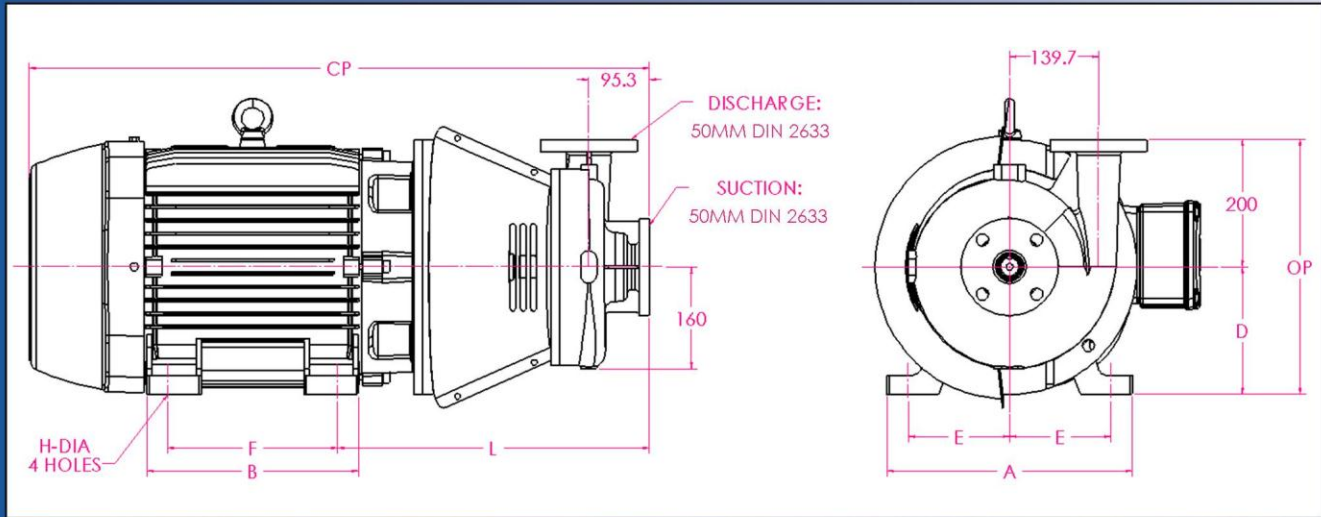
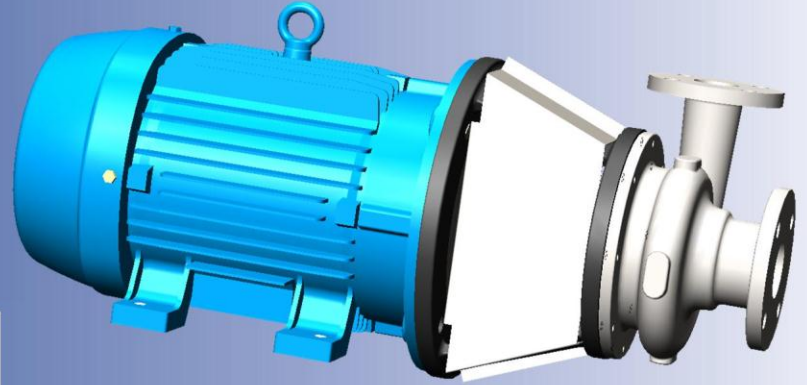


Ampco Centrifugal Pumps

DATA SHEET

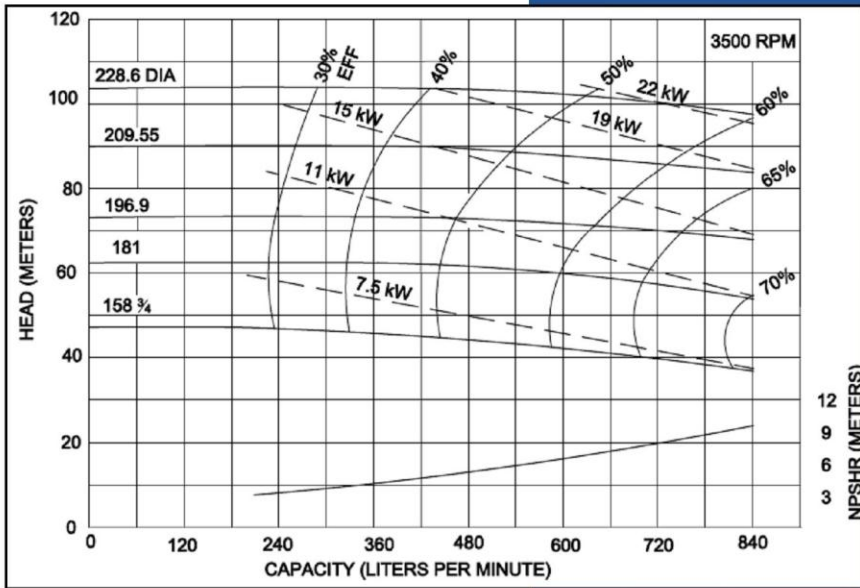
MODEL ZCM/ZCHM 2x2



IEC MOTOR		DIMENSIONS IN MM (For Reference Only)									APPROX. WEIGHT (KG)
FRAME	KW/RPM	A (max)	B (max)	D	E	F	H	L	CP	OP	
80	0.75/1450; 0.75/2900; 1.1/2900	155.1	124.0	80.0	65.6	100.0	10.0	298.6	483.1	280.0	69
90S	1.1/1450; 1.5/2900	169.4	144.9	90.0	70.0	100.0	10.0	301.6	525.1	290.0	69
90L	1.5/1450; 2.2/2900	169.4	144.9	90.0	70.0	125.0	10.0	301.6	525.1	290.0	73
100L	2.2/1450; 3/2900	196.0	170.0	100.0	80.0	140.0	12.0	323.0	576.0	300.0	83
112M	4/1450; 4/2900	220.0	177.0	112.0	95.0	140.0	12.0	330.0	594.0	312.0	95
132S	5.5/1450; 5.5/2900; 7.5/2900	248.0	187.0	132.0	108.0	140.0	12.0	389.2	670.8	332.0	123
132M	7.5/1450	248.0	187.0	132.0	108.0	178.0	12.0	389.2	670.8	332.0	123
160M	11/1450; 11/2900; 15/2900	308.0	254.0	160.0	127.0	210.0	14.5	451.1	831.1	360.0	185
160L	15/1450; 18.5/2900	308.0	254.0	160.0	127.0	254.0	14.5	451.1	831.1	360.0	207
180M	18.5/1450; 22/2900	350.0	294.0	180.0	139.5	241.0	14.5	464.2	896.8	380.0	261
180L	22/1450	350.0	294.0	180.0	139.5	279.0	14.5	464.2	896.8	380.0	261
200L	30/1450; 30/2900	385.0	332.0	200.0	159.0	267.0	18.5	489.6	974.3	400.0	303

PART NAME	NICKEL ALUMINUM BRONZE	STAINLESS STEEL
Casing, Cover & Impeller	AMPCO® 483	316 Stainless
Wear Ring	AMPCO® 18	316 Stainless
Motor Shaft	Steel	Steel
Shaft Sleeve	AMPCO® 18	316 Stainless
Adapter	Cast Iron	Cast Iron

* Also available in Duplex 2205



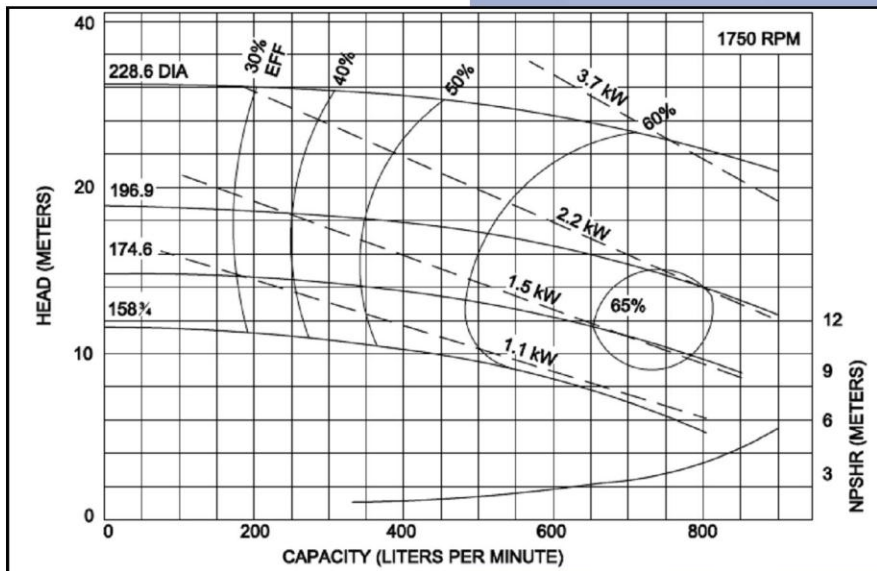
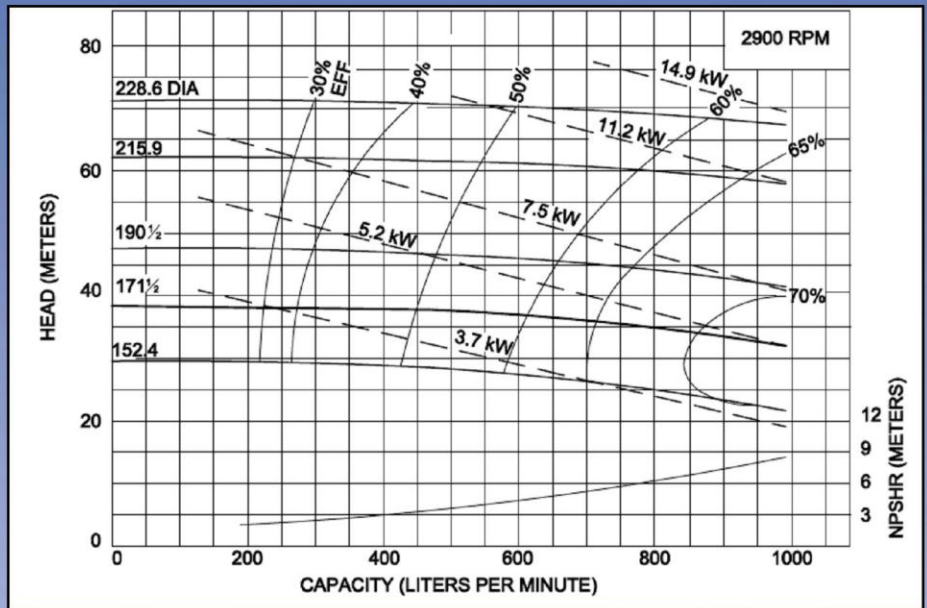
Ampco Centrifugal Pumps

MODEL ZCM/ZCHM 2x2

Curves show approximate characteristics
Based on clear 20° water.
Rated point is guaranteed.

Heavy-duty Z Series pumps have maximum wall thickness and Din PN10 flanged connections.

Seal options include Type 21, Type 1 and Type 9 with choice of sealing materials.



Ampco Pumps Company

2045 West Mill Road
Glendale, WI 53209
Phone: (414) 643-1852
Fax: (414) 643-4452

