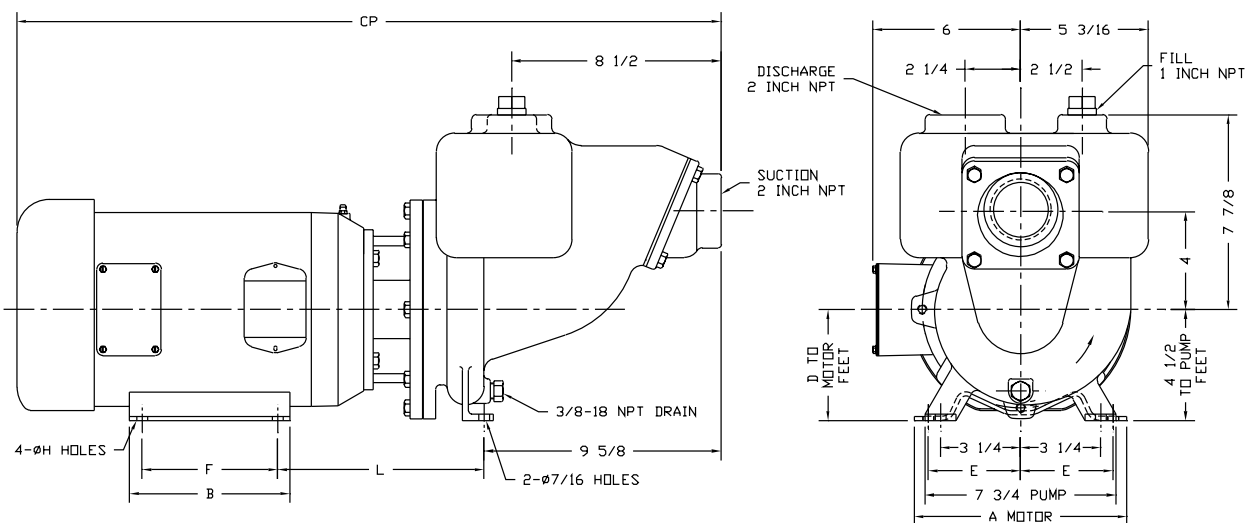
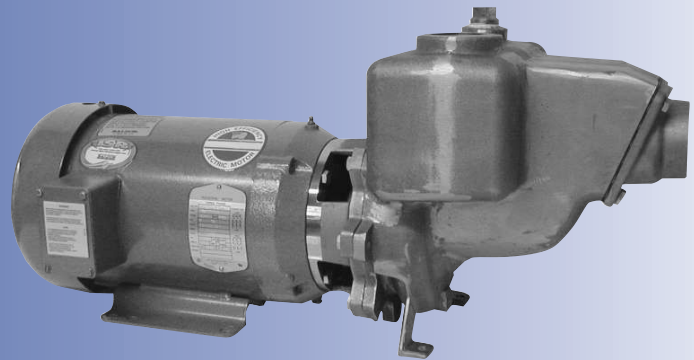


Ampco Centrifugal Pumps

DATA SHEET

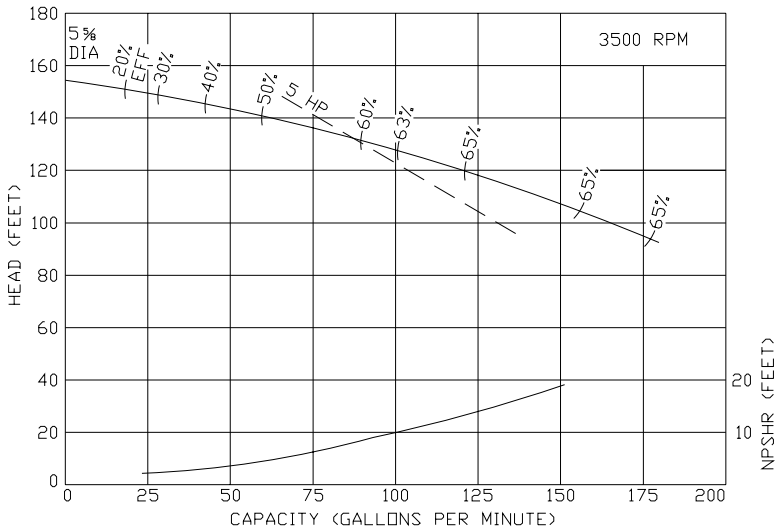
MODEL RC2 2X2C



TEFC MOTOR			DIMENSIONS IN INCHES (For Reference Only)								APPROX. WEIGHT
HP	RPM	FRAME	A (max)	B (max)	D	E	F	H	L	CP	
1	1750	143JM	6-1/2	6	3-1/2	2-3/4	4	11/32	7-3/4	25-11/16	101
1-1/2	1750	145JM	6-1/2	6	3-1/2	2-3/4	5	11/32	7-3/4	25-11/16	107
5	3500	184JM	8-5/8	6-1/2	4-1/2	3-3/4	5-1/2	13/32	8-3/8	28-9/16	137
7-1/2	3500	184JM	8-5/8	6-1/2	4-1/2	3-3/4	5-1/2	13/32	8-3/8	30-1/16	152

MATERIAL SPECIFICATIONS

PART NAME	NICKEL ALUMINUM BRONZE	STAINLESS STEEL
Casing, Impeller & Cover	AMPCO® 483	316 Stainless Steel
Shaft Sleeve	AMPCO® 18	316 Stainless Steel
Impeller Screw	AMPCO® 18	316 Stainless Steel
Motor Shaft	Steel	Steel



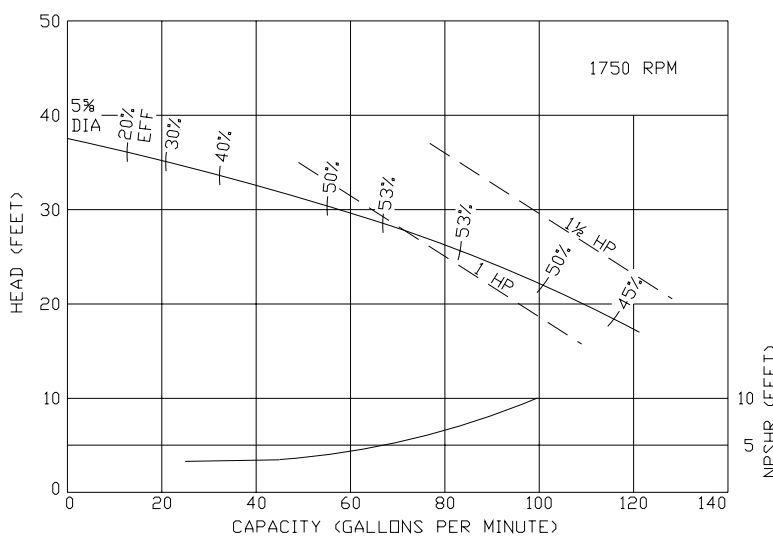
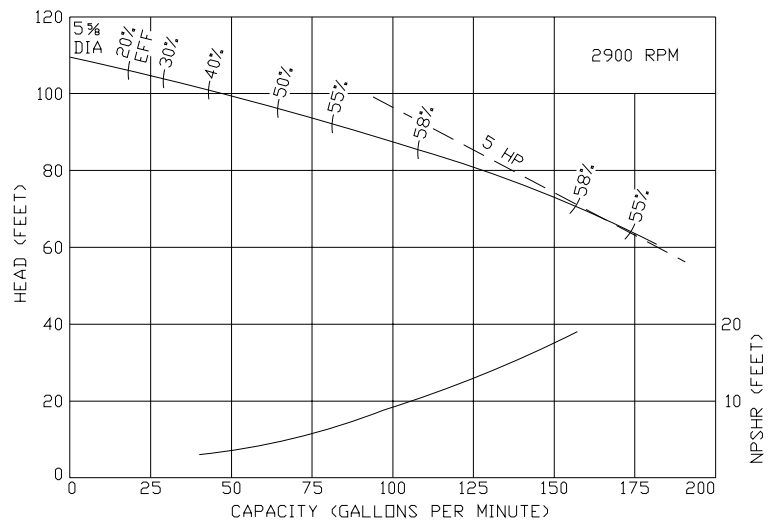
Ampco Centrifugal Pumps

MODEL RC2 2X2C

Curves show approximate characteristics based on clear 68° water. Rated point is guaranteed.

RC2 self-priming pumps are close coupled to JM frame motors and have NPT threaded connections.

Seal options include Type 21, Type 1 and Type 9 with choice of sealing materials.



Ampco Pumps Company

4424 West Mitchell Street
Milwaukee, Wisconsin 53214
PHONE (414) 643-1852
FAX (414) 643-4452