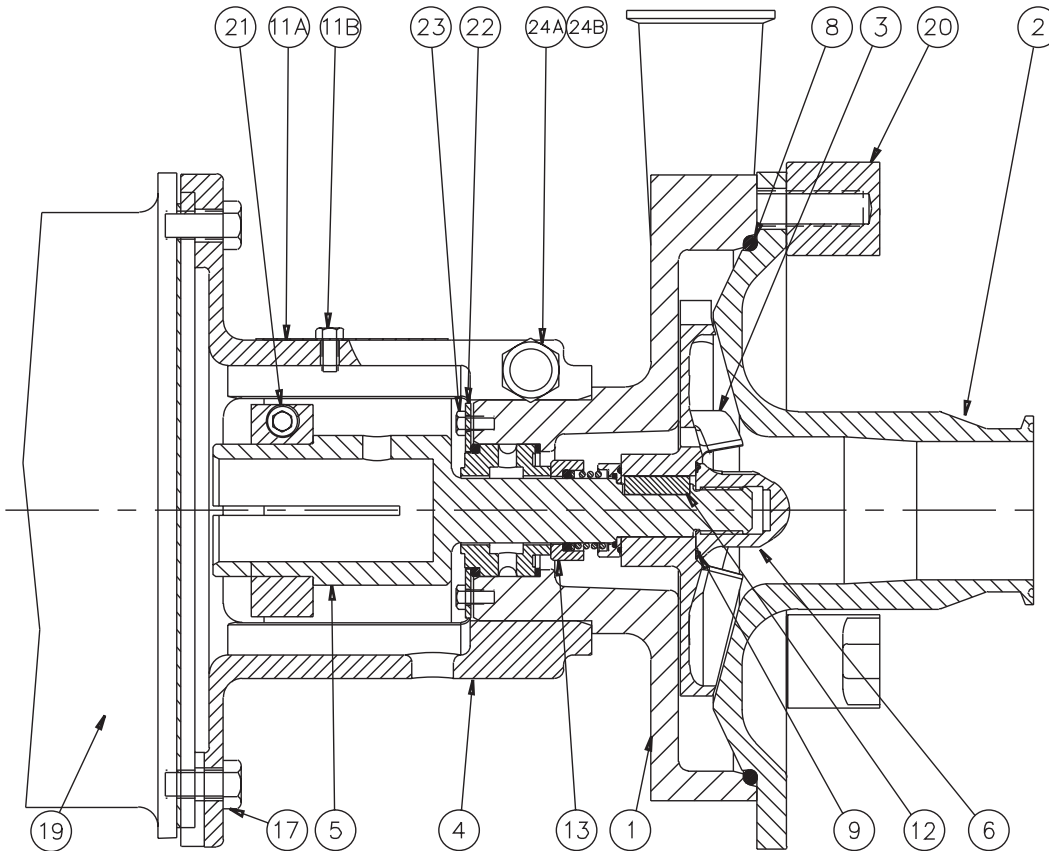


LC/LD PUMPS  
INTERNAL SEAL  
LC/LD Series Pumps 250 Frame and Under

AMPCO PUMPS COMPANY  
PARTS BREAKDOWN



DETAIL NO.	REQ. NO.	PART NAME
24B	1	ADAPTER TIGHTENING BOLT
24A	1	ADAPTER NUT
23	4 <sup>2</sup>	CAP SCREW (RETAINING RING)
22	1	RETAINING RING
21	1	SHAFT COLLAR
20	X <sup>3</sup>	STAR NUT
19	1	MOTOR
17	4	CAP SCREW (MOTOR/ADAPTER)
16 <sup>1</sup>	2	DRIVE SCREW
15 <sup>1</sup>	1	NAME PLATE
13	1	MECHANICAL SEAL
12	1	IMPELLER KEY
11B	1	SHAFT GUARD BOLT
11A	1	SHAFT GUARD
9	1	GASKET (IMPELLER SCREW)
8	1	O-RING (CASING/COVER)
6	1	IMPELLER SCREW
5	1	STUB SHAFT
4	1	ADAPTER
3	1	IMPELLER
2	1	COVER
1	1	CASING

<sup>1</sup>NOT SHOWN

<sup>2</sup>(6) SOCKET HEAD SET SCREWS FOR 250 FRAME

<sup>3</sup>STAR NUT QUANTITY VARIES WITH PUMP MODEL

NOTE: Please be sure to always include pump type, size, and serial number with any reference to above numbers and names.