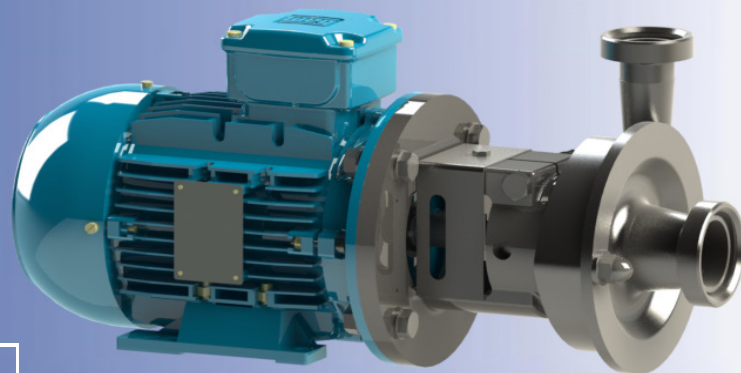


Ampco Centrifugal Pumps

DATA SHEET

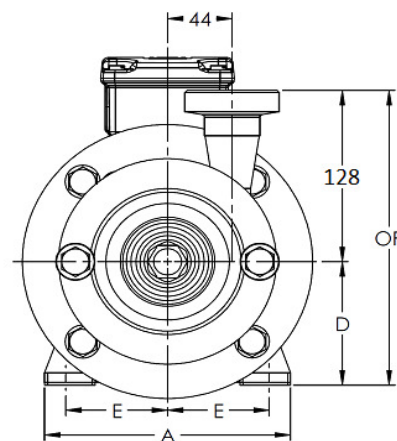
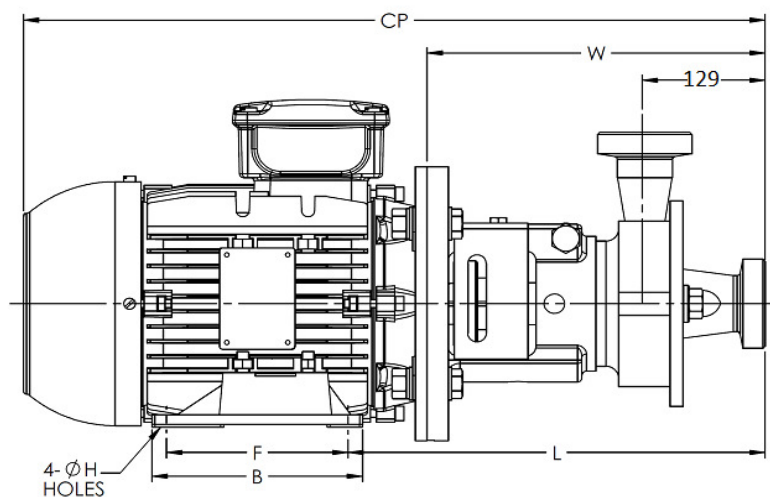
MODEL LM-R01 40 x 40

MODEL LM-R02 40 x 40



CE

Connections DIN 11851 thread



TEFC MOTOR			DIMENSIONS IN MILLIMETERS							(All Values For Reference Only)			MASS
kW	RPM	FRAME	A (typ)	B (typ)	D	E	F	ØH	L	W	CP	OP	Kg
0.75kW	1450	80	149	125.5	80	62.5	100	10	283	233	470	205	23
0.75kW	2900	80	149	125.5	80	62.5	100	10	283	233	470	205	22

MATERIAL SPECIFICATIONS

PART NAME	STAINLESS STEEL
Casing, Cover & Impeller	316L Stainless
Stub Shaft	316L Stainless
Adapter	304 Stainless

PUMP CURVES

MODEL LM-R01 40 x 40

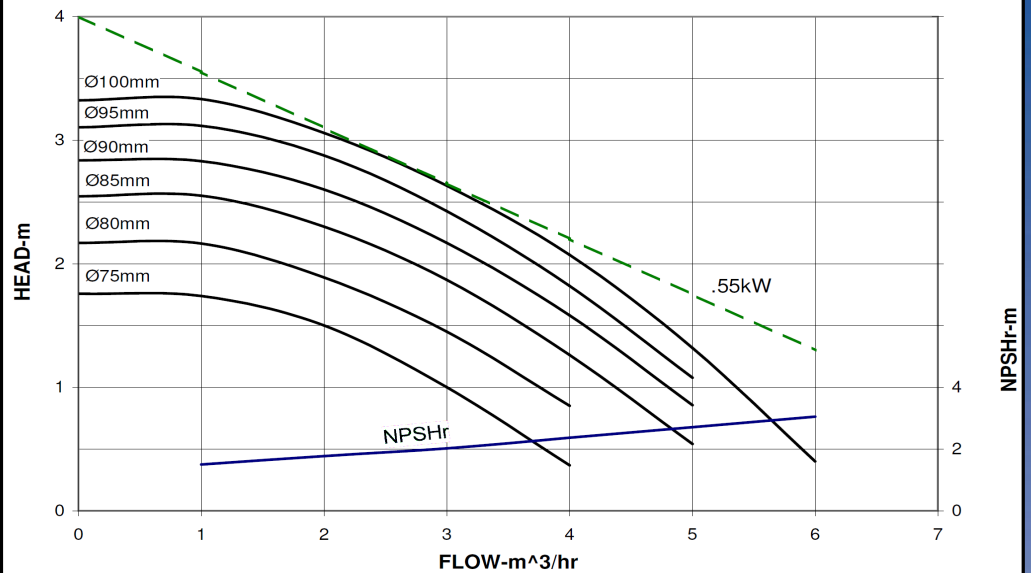
MODEL LM-R02 40 x 40

Curves show approximate characteristics based on clear 20°C water.
Rated point is guaranteed

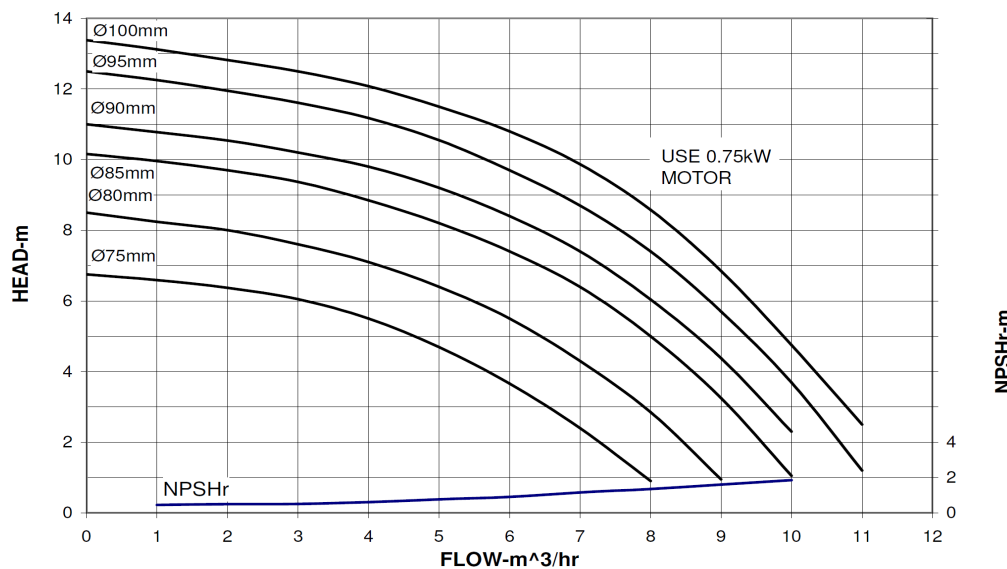
LM-Series pumps have standard stainless steel adapters and silicon carbide vs. carbon seals.

Ampco Centrifugal Pumps

LM-R01 1450 RPM



LM-R02 2900 RPM



LM pumps are in conformance with 3A sanitary standards for centrifugal and positive rotary pumps for milk and milk products, Number 02-10.

LM-Series pumps have a standard 0.8µm (micrometers) finish, on all product contact surfaces.

**Ampco
Pumps
Company**

2045 West Mill Road
Glendale, Wisconsin 53209
PHONE (414) 643-1852
FAX (414) 643-4452

LM-R01/R02 40X40 01/11