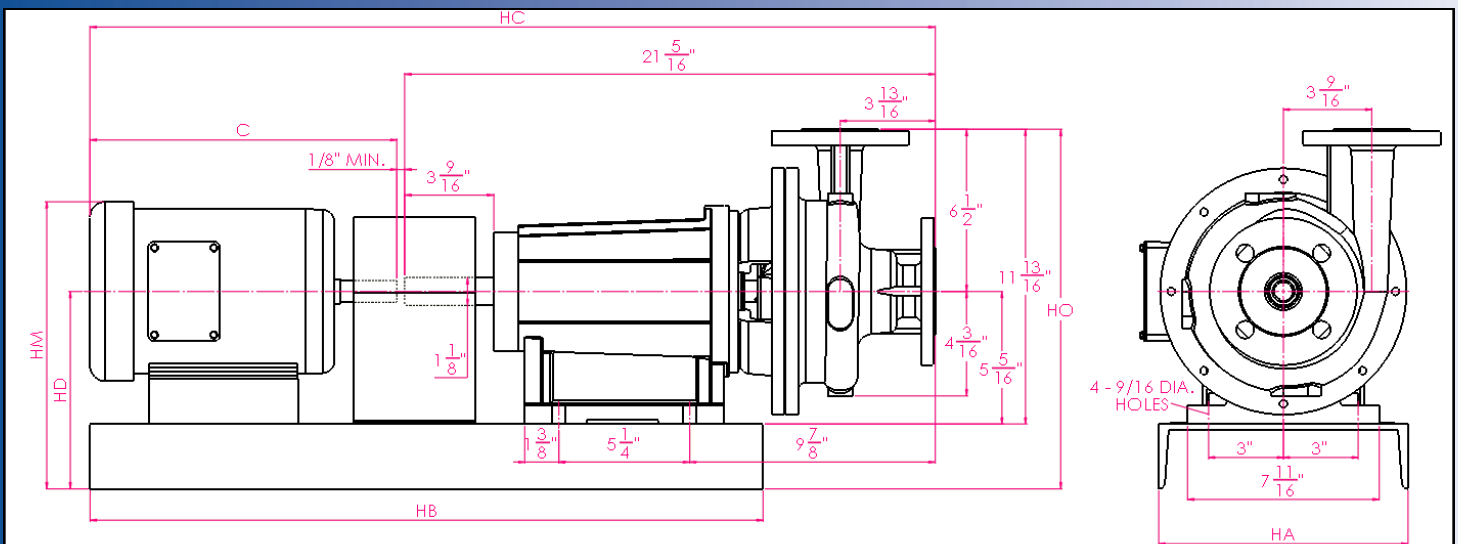
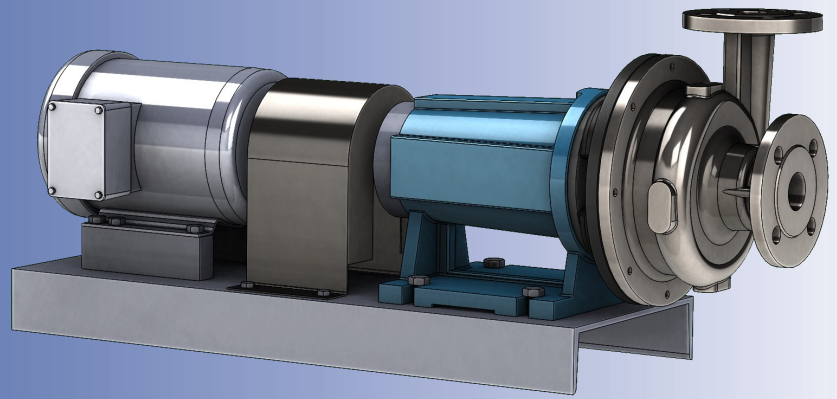


Ampco Centrifugal Pumps

DATA SHEET

MODEL Z-PE01 1½ x 1¼



TEFC MOTOR			DIMENSIONS IN. (For Reference Only)						
HP	RPM	FRAME	C	HA	HB	HC	HD	HM	HO
1	1750	143T	12-5/16	10.00	27.00	33-15/16	7-15/16	11-1/2	14-7/16
2	3500	145T	12-5/16	10.00	27.00	33-15/16	7-15/16	11-1/2	14-7/16
3	3500	182T	16-9/16	10.00	31-1/4	38-1/16	7-15/16	12-3/16	14-7/16
5	3500	184T	16-9/16	10.00	31-1/4	38-1/16	7-15/16	12-3/16	14-7/16
7-1/2	3500	213T	18.00	10.00	32-3/4	39-9/16	7-15/16	12-3/16	14-7/16

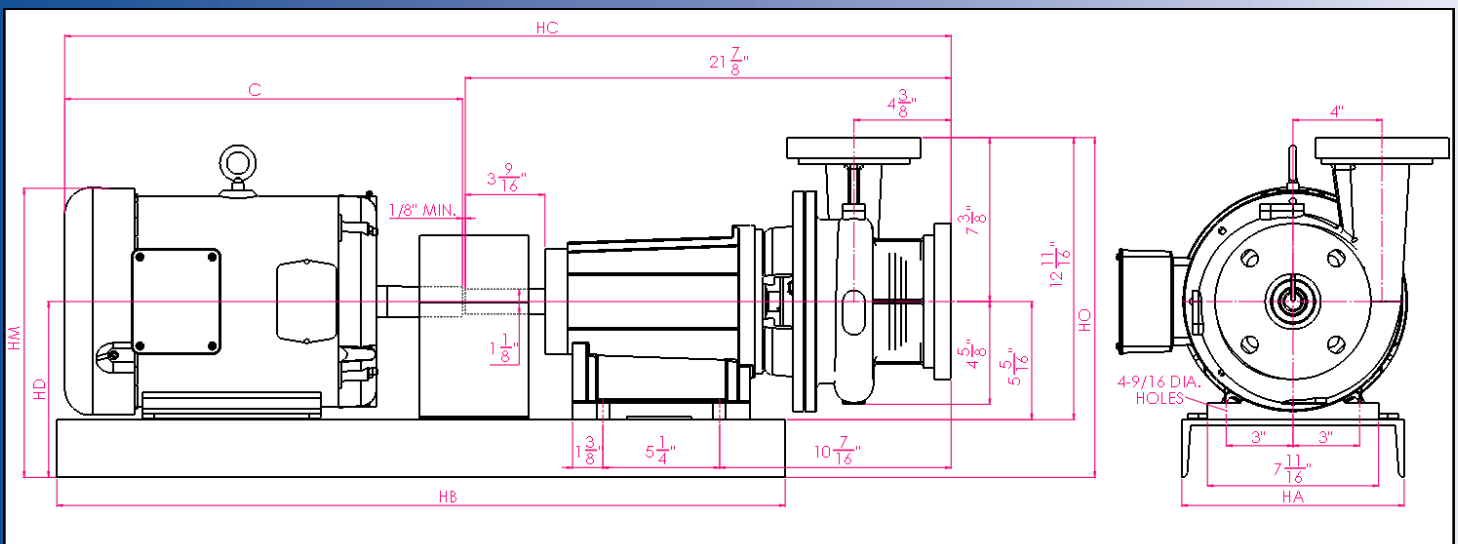
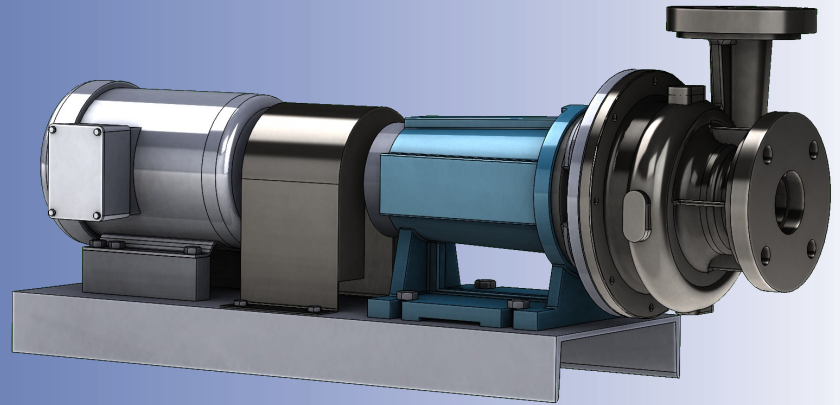
MATERIAL SPECIFICATIONS

PART NAME	NICKEL ALUMINUM BRONZE	STAINLESS STEEL	DUPLEX 2205
Casing, Cover, & Impeller	AMPCO® 483	316 Stainless	Duplex 2205
Wear Ring	AMPCO® 18	316 Stainless	Duplex 2205
Motor Shaft	Steel	Steel	Steel
Shaft Sleeve	AMPCO® 18	316 Stainless	Duplex 2205
Adapter	Cast Iron	Cast Iron	Cast Iron

Ampco Centrifugal Pumps

DATA SHEET

MODEL Z-PE01 2.5X2



TEFC MOTOR			DIMENSIONS IN. (For Reference Only)						
HP	RPM	FRAME	C	HA	HB	HC	HD	HM	HO
2	3500	145T	12-5/16	10	27	34.41	7-15/16	11-1/2	15-5/16
3	3500	182T	16-9/16	10	31-1/4	38.01	7-15/16	12-3/16	15-5/16
5	3500	184T	16-9/16	10	31-1/4	38.01	7-15/16	12-3/16	15-5/16
7-1/2	3500	213T	18-1/16	10	32-1/4	39.51	7-15/16	12-3/16	15-5/16
10	3500	215T	17-7/8	10	32-3/4	39-7/8	7-15/16	13	15-5/16
15	3500	254T	20-1/2	10	35	42-1/2	7-15/16	13	15-5/16

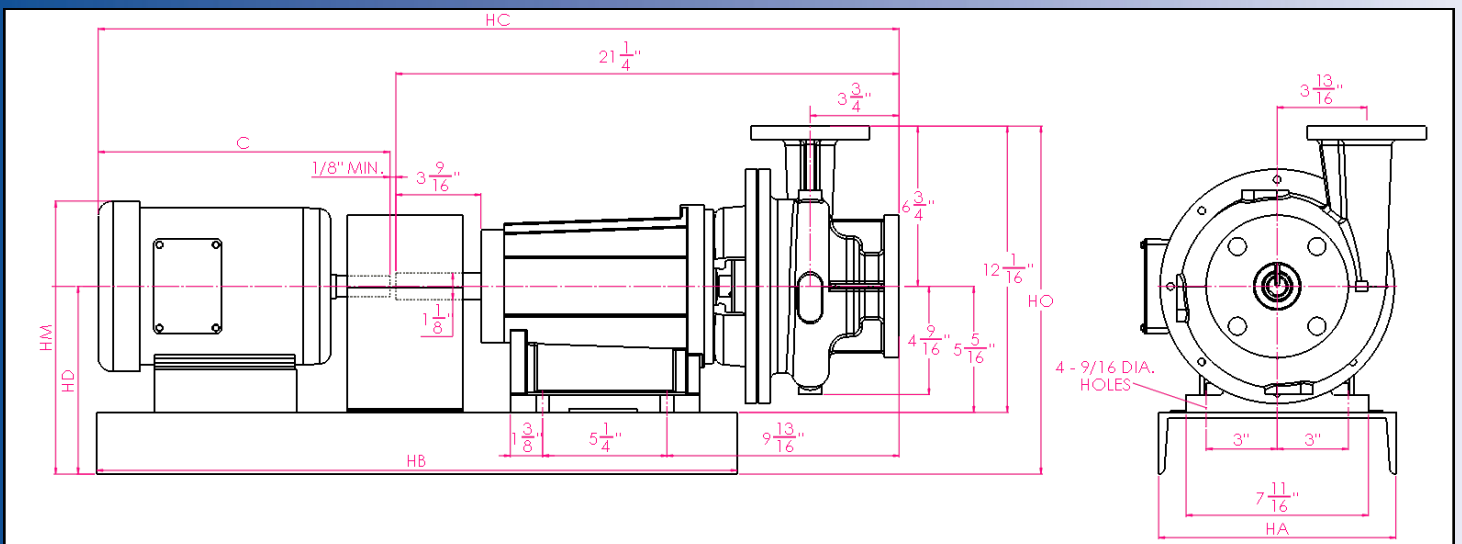
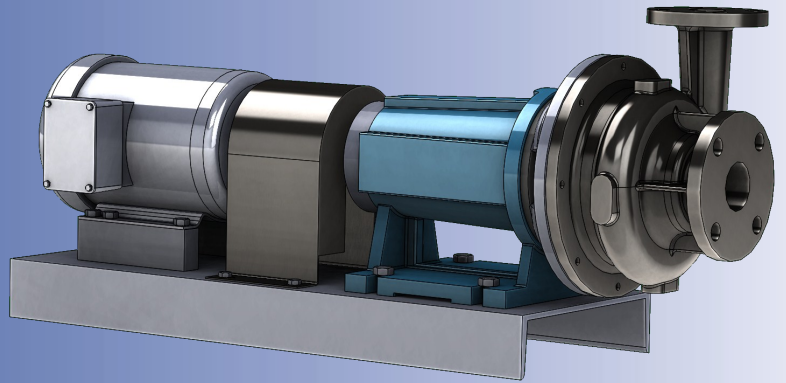
MATERIAL SPECIFICATIONS

PART NAME	NICKEL ALUMINUM BRONZE	STAINLESS STEEL	DUPLEX 2205
Casing, Cover, & Impeller	AMPCO® 483	316 Stainless	Duplex 2205
Wear Ring	AMPCO® 18	316 Stainless	Duplex 2205
Motor Shaft	Steel	Steel	Steel
Shaft Sleeve	AMPCO® 18	316 Stainless	Duplex 2205
Adapter	Cast Iron	Cast Iron	Cast Iron

Ampco Centrifugal Pumps

DATA SHEET

MODEL Z-PE01 2x1½



TEFC MOTOR			DIMENSIONS IN. (For Reference Only)						
HP	RPM	FRAME	C	HA	HB	HC	HD	HM	HO
1	1750	143T	12-5/16	10	27.00	33-13/16	7-15/16	11-1/2	14-11/16
2	3500	145T	12-5/16	10	27.00	33-15/16	7-15/16	11-1/2	14-11/16
3	3500	182T	16-9/16	10	31-1/4	38	7-15/16	12-3/16	14-11/16
5	3500	184T	16-9/16	10	31-1/4	38	7-15/16	12-3/16	14-11/16
7-1/2	3500	213T	18-1/16	10	32-3/4	39-1/2	7-15/16	12-3/16	14-11/16

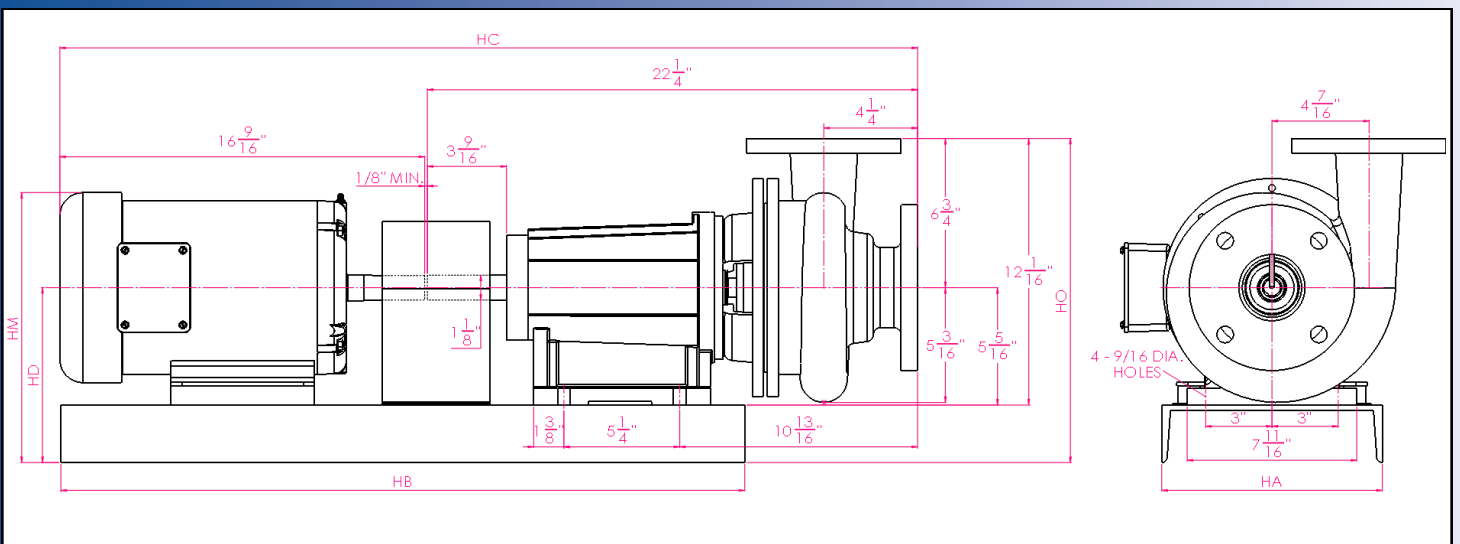
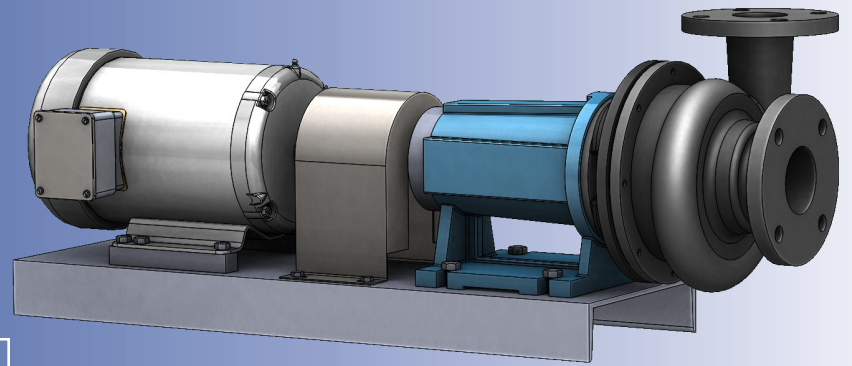
MATERIAL SPECIFICATIONS

PART NAME	NICKEL ALUMINUM BRONZE	STAINLESS STEEL	DUPLEX 2205
Casing, Cover, & Impeller	AMPCO® 483	316 Stainless	Duplex 2205
Wear Ring	AMPCO® 18	316 Stainless	Duplex 2205
Motor Shaft	Steel	Steel	Steel
Shaft Sleeve	AMPCO® 18	316 Stainless	Duplex 2205
Adapter	Cast Iron	Cast Iron	Cast Iron

Ampco Centrifugal Pumps

DATA SHEET

MODEL Z-PE01 3x2.5



TEFC MOTOR			DIMENSIONS IN. (For Reference Only)						
HP	RPM	FRAME	C	HA	HB	HC	HD	HM	HO
3	3500	182T	16-9/16	10	31	38-7/8	7-15/16	12-3/16	14-11/16
5	3500	184T	16-9/16	10	31	38-7/8	7-15/16	12-3/16	14-11/16
7-1/2	3500	213T	18-1/16	10	32-1/2	40-3/8	7-15/16	12-3/16	14-11/16
10	3500	215T	18-1/16	10	32-1/2	40-3/8	7-15/16	12-3/16	14-11/16

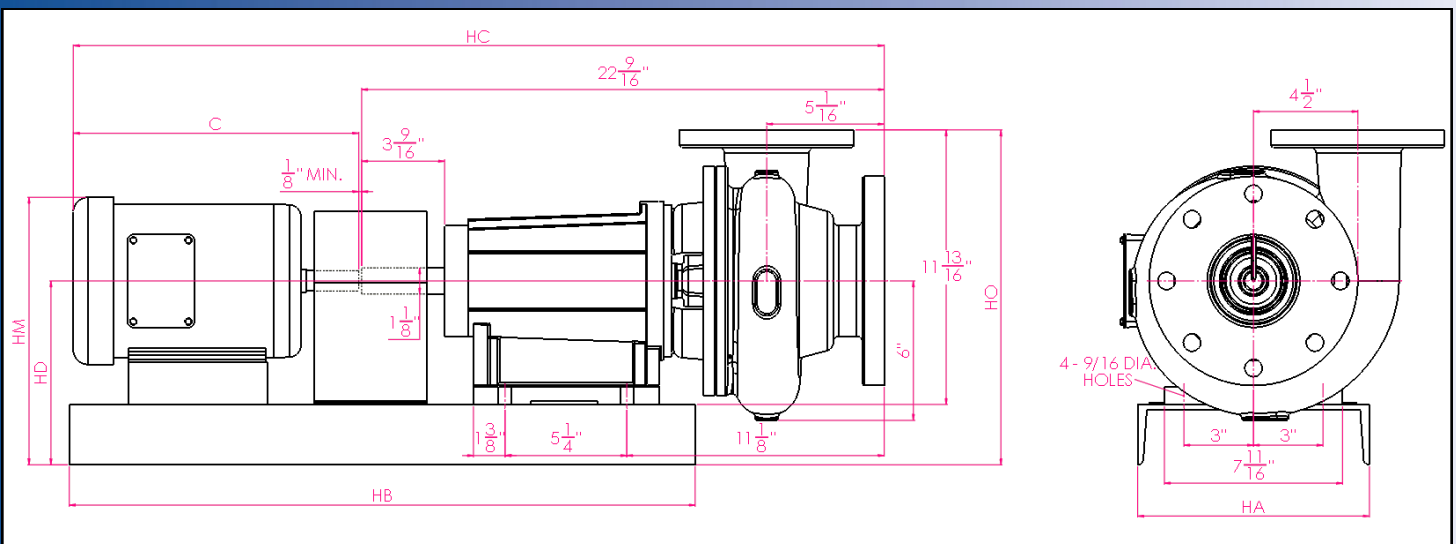
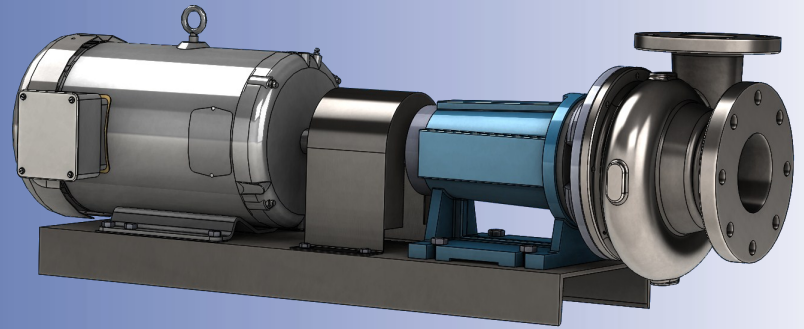
MATERIAL SPECIFICATIONS

PART NAME	NICKEL ALUMINUM BRONZE	STAINLESS STEEL	DUPLEX 2205
Casing, Cover, & Impeller	AMPCO® 483	316 Stainless	Duplex 2205
Wear Ring	AMPCO® 18	316 Stainless	Duplex 2205
Motor Shaft	Steel	Steel	Steel
Shaft Sleeve	AMPCO® 18	316 Stainless	Duplex 2205
Adapter	Cast Iron	Cast Iron	Cast Iron

Ampco Centrifugal Pumps

DATA SHEET

MODEL Z-PE01 4X3



TEFC MOTOR			DIMENSIONS IN. (For Reference Only)						
HP	RPM	FRAME	C	HA	HB	HC	HD	HM	HO
2	1750	145T	12-5/16	10	27	35	7-15/16	11-1/2	14-7/16
3	1700	182T	16-9/16	10	31	39-3/16	7-15/16	12-3/16	14-7/16
5	3500	184T	16-9/16	10	31	39-3/16	7-15/16	12-3/16	14-7/16
7-1/2	3500	213T	18-1/16	10	32-1/2	40-11/16	7-15/16	12-3/16	14-7/16
10	3500	215T	18-1/16	10	32-1/2	40-11/16	7-15/16	12-3/16	14-7/16
15	3500	254T	20-1/2	10	32-1/2	43-3/16	7-15/16	13	14-7/16

MATERIAL SPECIFICATIONS

PART NAME	NICKEL ALUMINUM BRONZE	STAINLESS STEEL	DUPLEX 2205
Casing, Cover, & Impeller	AMPCO® 483	316 Stainless	Duplex 2205
Wear Ring	AMPCO® 18	316 Stainless	Duplex 2205
Motor Shaft	Steel	Steel	Steel
Shaft Sleeve	AMPCO® 18	316 Stainless	Duplex 2205
Adapter	Cast Iron	Cast Iron	Cast Iron