

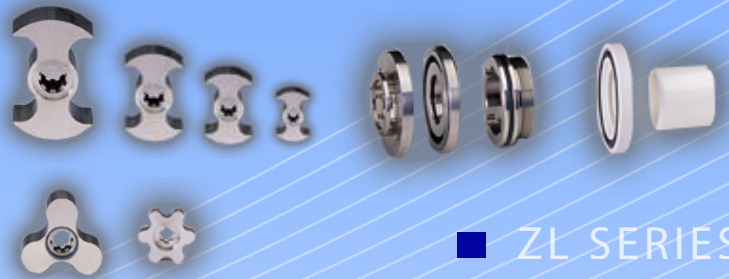


# Ampco Pumps Company



ZL SERIES

ZL Series Rotary Lobe Positive Displacement Pumps



ZL SERIES



ZL SERIES



# Ampco Pumps Company

## ZL Series Rotary Lobe Positive Displacement Pumps

- Ampco's new ZL Series positive displacement pumps raise the bar for reliability, ease-of-maintenance, and CIP performance. ZL pumps are in conformance with 3A Sanitary standards and are also EHEDG (European Hygienic Design Group) certified.
- The ZL Series' unique front loading seal design provides faster maintenance, easier cleaning, and reduced downtime versus competing pumps. Both rotors and product seals may be accessed by simply removing the front cover while the pump's process connections remain in place.
- Optional o-ring seal or PTFE lip seal designs offer additional flexibility in unique applications. All available seal options fit into the same rotor case and may be easily modified, even after the pump has been installed.
- Optional thermal jackets are available for the pump cover and casing in applications where the pump needs to be heated or cooled.
- Optional hardened materials for wetted components are available in order to accommodate abrasive fluid media.
- The standard finish for the 316 stainless steel pump components is 32 Ra. An optional 16 Ra surface finish is available.
- A specially-designed version of the ZL pump is available for road-tanker applications.
- An optional rectangular inlet is available for heavy viscous products or meat slurries.



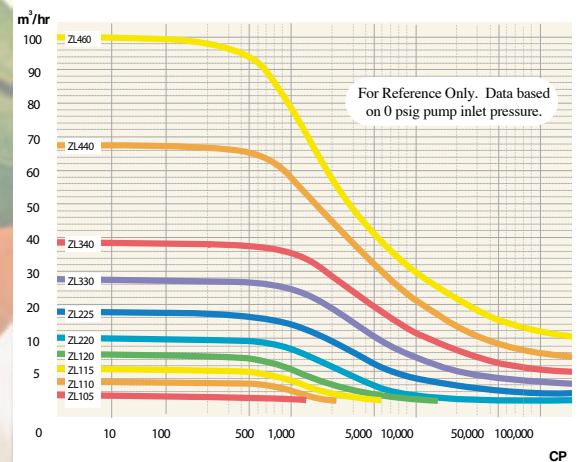
### Standard Design Features

- Four gear box sizes with two types of rotor housings each
- Horizontal process connections (convertible to vertical connections)
- Single mechanical seal (optional double mechanical seals, o-ring seals and lip seals)
- Tri-clamp type process connections (NPT, BSPP, DIN, and ANSI flange optional)
- Bi-wing type rotors are standard. Single wing, tri-lobe, and multi-lobe rotors are optional.

### Applications

- Ampco's ZL Series pumps are designed to suit all sanitary pumping applications found in the food, dairy, beverage, and pharmaceutical industries.
- ZL Series pumps will accommodate liquids with viscosities ranging from 1.0 to 1,000,000 cP and are suitable in applications with self-priming requirements up to 12 feet, flow rates up to 450 GPM, and heads up to 820 feet.

### Performance Curve



# Ampco Pumps Company

## ZL Series Rotary Lobe Positive Displacement Pumps



Pump equipped with optional thermal jacket



Pump equipped with standard bi-wing rotors

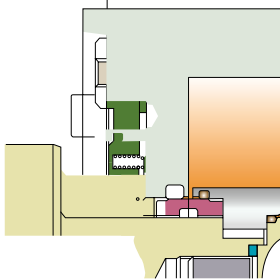


Pump equipped with optional tri-lobe rotors

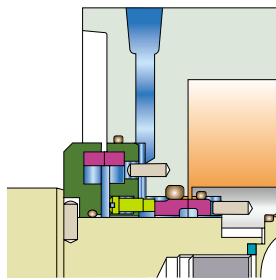
ZL SERIES



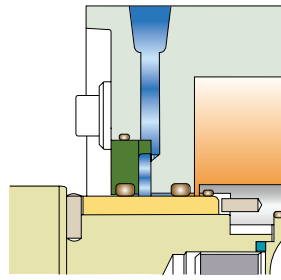
Inlet machined for adapting to hopper connection



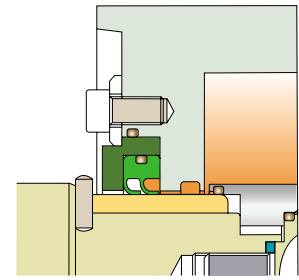
Single mechanical seal



Double mechanical seal



Double o-ring seal



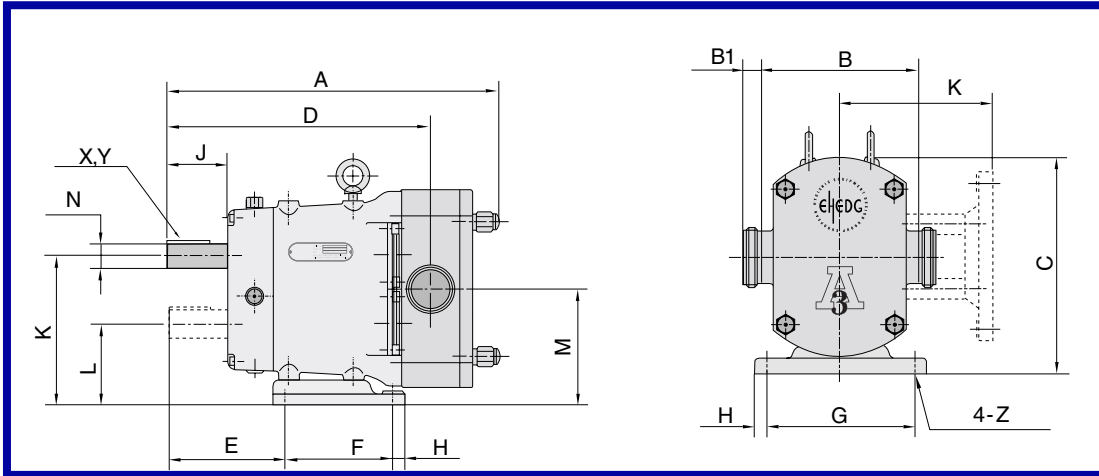
Lip seal



ZL Series	Model No	Displacement			Standard Connection Size		Max. Differential Pressure		Max. Speed
		Gallons/100 rev	Liters/rev	Fluid Ounces/rev	inches	mm	PSI	Bar	Rev/min
100	ZL105-002-20	0.53	0.02	0.68	1	25	290	20	900
	ZL110-005-20	1.32	0.05	1.69	1	25	290	20	1000
	ZL115-012-12	3.17	0.12	4.06	1.5	40	175	12	800
200	ZL120-021-08	5.54	0.21	7.09	2	50	115	8	800
	ZL220-040-12	10.81	0.41	13.84	2	50	175	12	700
300	ZL225-062-08	16.35	0.62	20.93	2.5	65	115	8	700
	ZL330-102-12	26.90	1.02	34.43	3	80	175	12	600
400	ZL340-144-08	37.98	1.44	48.61	4	100	115	8	600
	ZL440-227-12	59.88	2.27	76.65	4	100	175	12	500
	ZL460-334-08	88.10	3.34	112.77	6	150	115	8	500



# The Reliable Choice for any Application



Model No.	Ports	Dimension (mm)															
		A	B	C	D	E	F	G	H	J	K	L	M	N	X	Y	Z
ZL110-005-20	1"	255	152	200	218	96	84	134	12	50	141	77	109	23	30	8	9
ZL115-012-12	1 1/2"	264	152	222	218	96	84	134	12	50	141	77	109	23	30	8	9
ZL120-021-08	2"	284	152	230	218	96	84	134	12	50	141	77	109	23	30	8	9
ZL220-040-12	2"	386	188	264.5	305	129	132	180	15	60	185	101	143	32	50	10	11
ZL225-062-08	2 1/2"	406	188	264.5	315	129	132	180	15	60	185	101	143	32	50	10	11
ZL330-102-12	3"	533	242	347.5	390	159	160	242	22	70	243.5	128.5	186	45	60	14	13
ZL340-144-08	4"	546	242	347.5	402	159	160	242	22	70	243.5	128.5	186	45	60	14	13
ZL440-227-12	4"	674	324	458	506	199	210	320	30	80	324	170	247	55	87	14	15
ZL450-334-08	5"	709	324	458	523	199	210	320	30	80	324	170	247	55	87	14	15

Model No.	Ports	Dimension B1 (mm)					Weight KG	Volume M <sup>3</sup>
		ISO	BS	DIN	SMS	BRIDA		
ZL110-005-20	1"	20	26	30	20	30	12	0.01
ZL115-012-12	1 1/2"	20	26	30	20	30	19	0.01
ZL120-021-08	2"	22	26	30	20	30	23	0.01
ZL220-040-12	2"	26	26	35	24	35	45	0.03
ZL225-062-08	2 1/2"	26	26	35	24	35	51	0.03
ZL330-102-12	3"	28	26	40	24	40	91	0.06
ZL340-144-08	4"	28	26	40	24	40	103	0.06
ZL440-227-12	4"	28	26	40	24	40	180	0.15
ZL450-334-08	5"	28	26	54	35	54	210	0.15



2045 West Mill Road • Glendale, Wisconsin  
 Ph: 414.643.1852 • Fx: 414.643.4452  
[www.ampcopumps.com](http://www.ampcopumps.com)