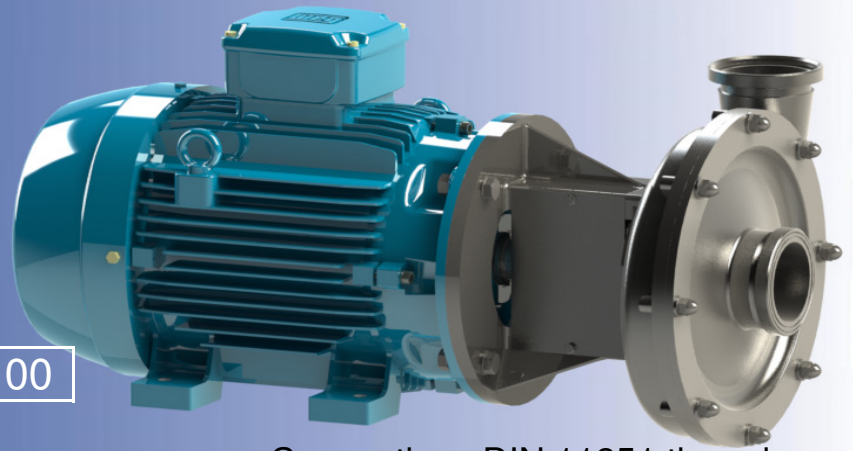


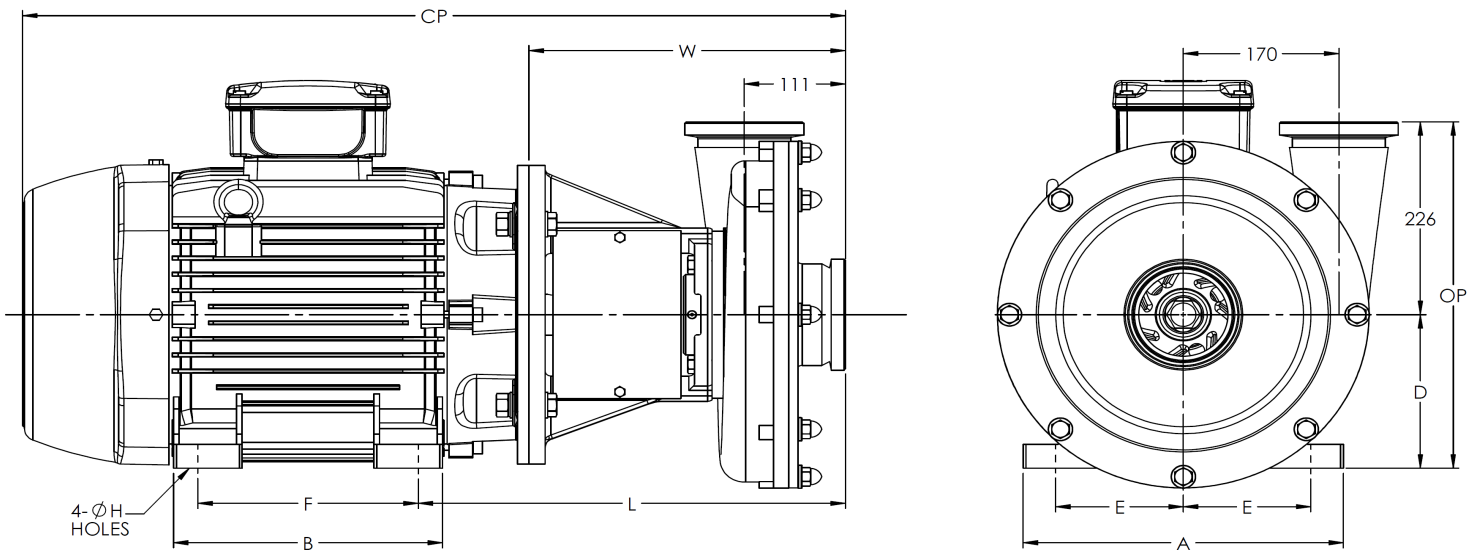
Ampco Centrifugal Pumps

DATA SHEET

MODEL LM-X161 100 x 100



Connections DIN 11851 thread



TEFC MOTOR			DIMENSIONS IN MILLIMETERS									(All Values For Reference Only)	MASS
<small>Data subject to change without notice.</small>												Kg	
kW	RPM	FRAME	A (typ)	B (typ)	D	E	F	ØH	L	W	CP	OP	Kg
7.5kW	1450	132M	248	225	132	108	178	12	435	346	755	358	135
11kW	1450	160M	308	254	160	127	210	14.5	454	346	841	386	203
15kW	1450	160L	308	298	160	127	254	14.5	454	346	841	386	208
18.5kW	1450	180M	350	294	180	139.5	241	14.5	467	346	899	406	260
22kW	1450	180L	350	332	180	139.5	279	14.5	467	346	899	406	280
30kW	1450	200L	385	370	200	159	305	18.5	479	346	964	426	331

MATERIAL SPECIFICATIONS

PART NAME	STAINLESS STEEL
Casing, Cover & Impeller	316L Stainless
Stub Shaft	316L Stainless
Adapter	304 Stainless

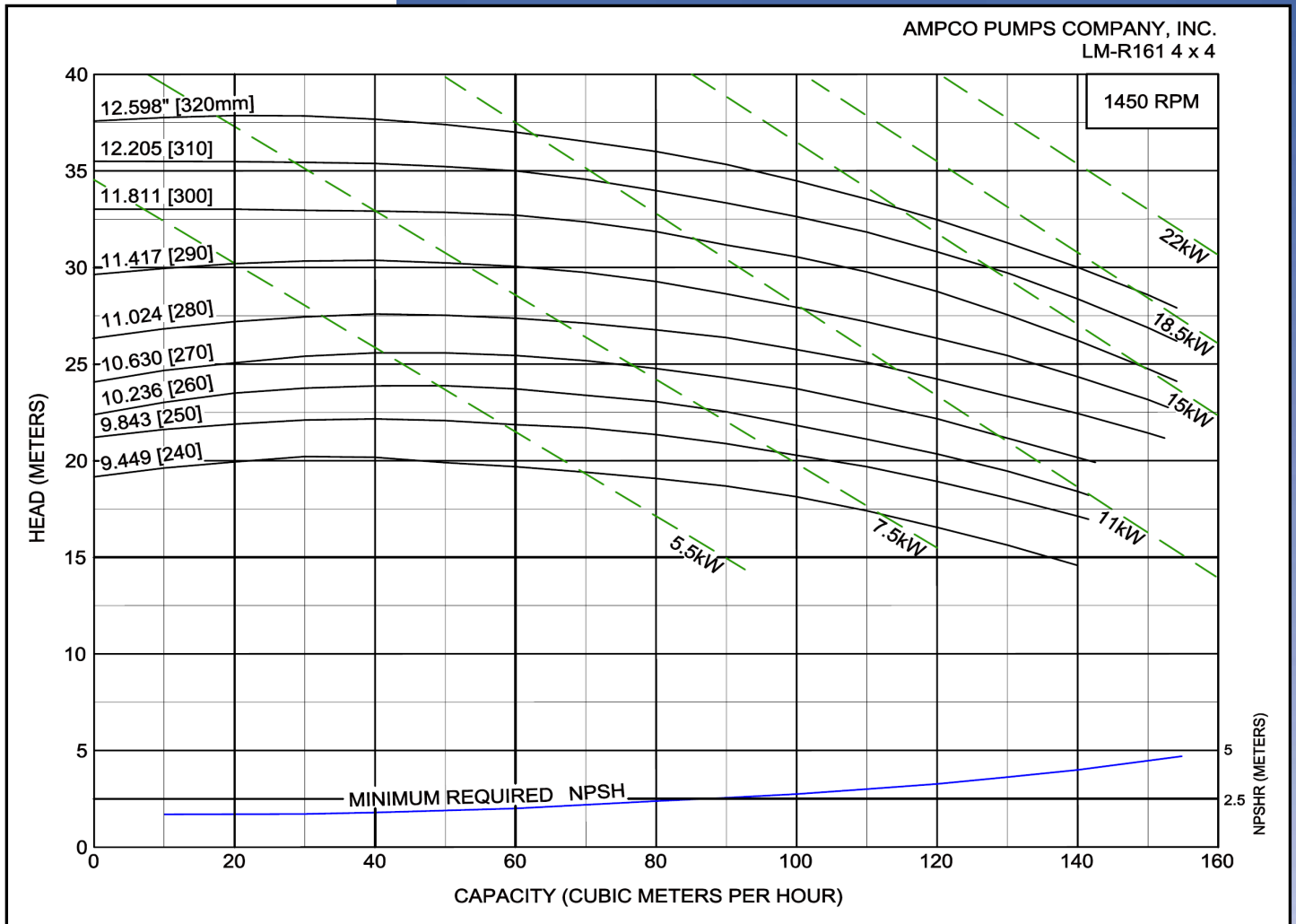
Ampco Centrifugal Pumps

PUMP CURVE

MODEL LM-X161 100 x 100

Curves show approximate characteristics based on clear 20°C water.
Rated point is guaranteed

LM-Series pumps have standard stainless steel adapters and silicon carbide vs. carbon seals.



LM pumps are in conformance with 3A sanitary standards for centrifugal and positive rotary pumps for milk and milk products, Number 02-10.

LM-Series pumps have a standard 0.8µm (micrometers) finish, on all product contact surfaces.

AmpcoPumps Company

2045 West Mill Road-Glendale, Wisconsin 53209-PHONE (414) 643-1852-FAX (414) 643-4452

LM-X161 100X100 1/11